

MS Series

Ball screw Actuator

MODEL

MS 052

MS 064

MS 076

MS 092

MS 126

MS 160

MS 200



Peripheral Device



C O N T E N T S

Feature 010

Composition 012

MS 052 013

MS 064 017

MS 076 021

MS 092 025

MS 126 030

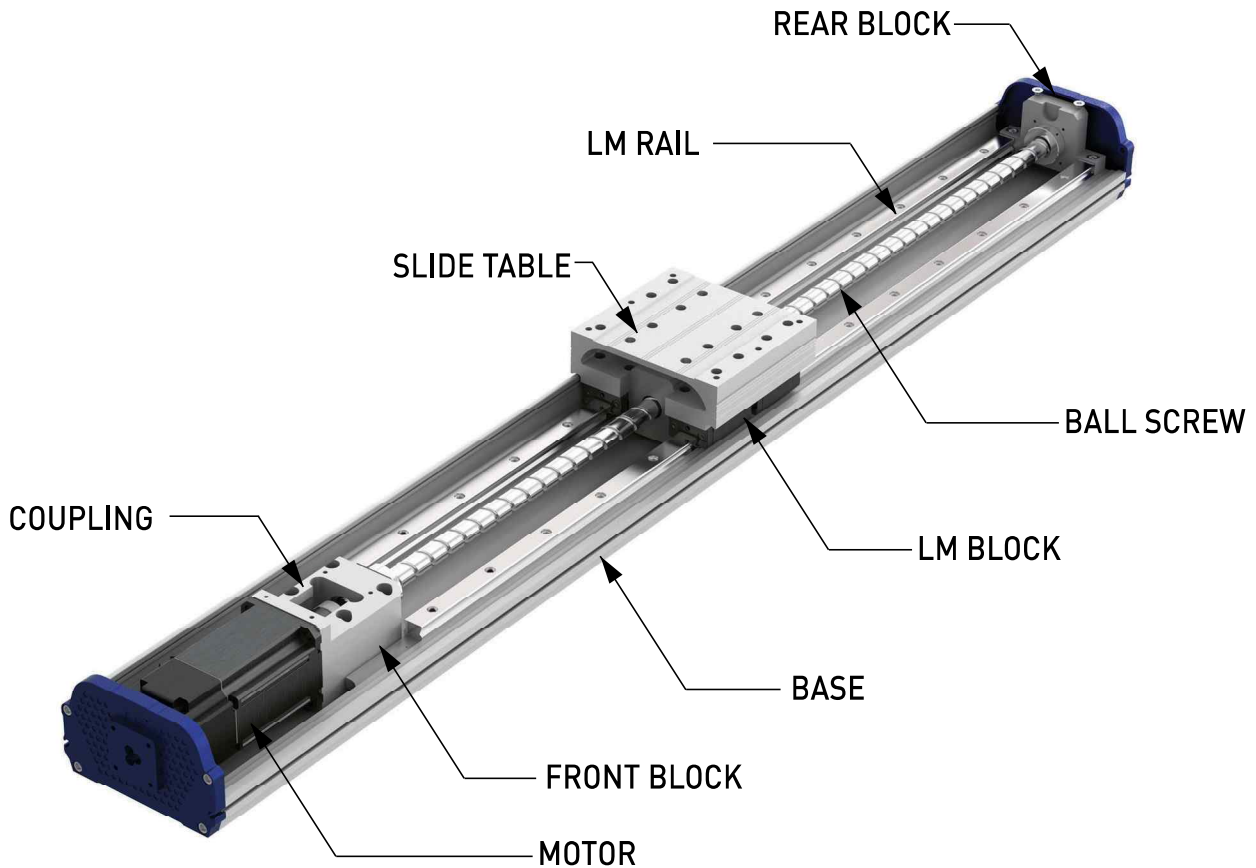
MS 160 034

MS 200 038

Other 000

MS Series

MS Assembly



Feature

- High Quality
숙련된 노하우(Know - How)와 철저한 품질관리
- Short Delivery
표준화 정립과 재고보유로 단 납기 확보
- Low Cost
부품간 표준화 정립으로 가격 경쟁력 확보
- High Hardness
고강성과 높은 정밀도로 내구성이 강하며, 긴 수명을 장 기간 유지가능

○ 사용 시 주의사항

1. 점검 및 주유시기

제품의 정기적 점검과 Grease 주입으로 LM Guide 및 Ball Screw의 손상을 방지 할 수 있습니다.

구 분	주 기	점검 및 Grease절차
Ass'y	상시	제품의 동작 및 소음발생 확인
Ball Screw	1회/6개월	Ball Screw 축경 도포 및 Nut의 Nipple에 그리스 건을 삽입하여 주입
LM Guide	1회/6개월	LM Block의 Nipple에 그리스 건을 삽입하여 주입

2. 제품 내부 주기적 청소

제품 내부의 주기적 청소로 이물질 혼입을 방지하여 제품 고장 없이 장기간 사용 할 수 있습니다.

(육안으로 이물질 발생시 상부Cover 및 측면Cover를 열고 진공 청소기 및 에어건을 이용하여 내부 이물질 제거 후 사용하시기 바랍니다.)

3. 제품의 체결부 상시 확인

각 체결부의 체결상태를 확인하여 제품의 정도 및 변형 없이 장기간 사용 할 수 있습니다.

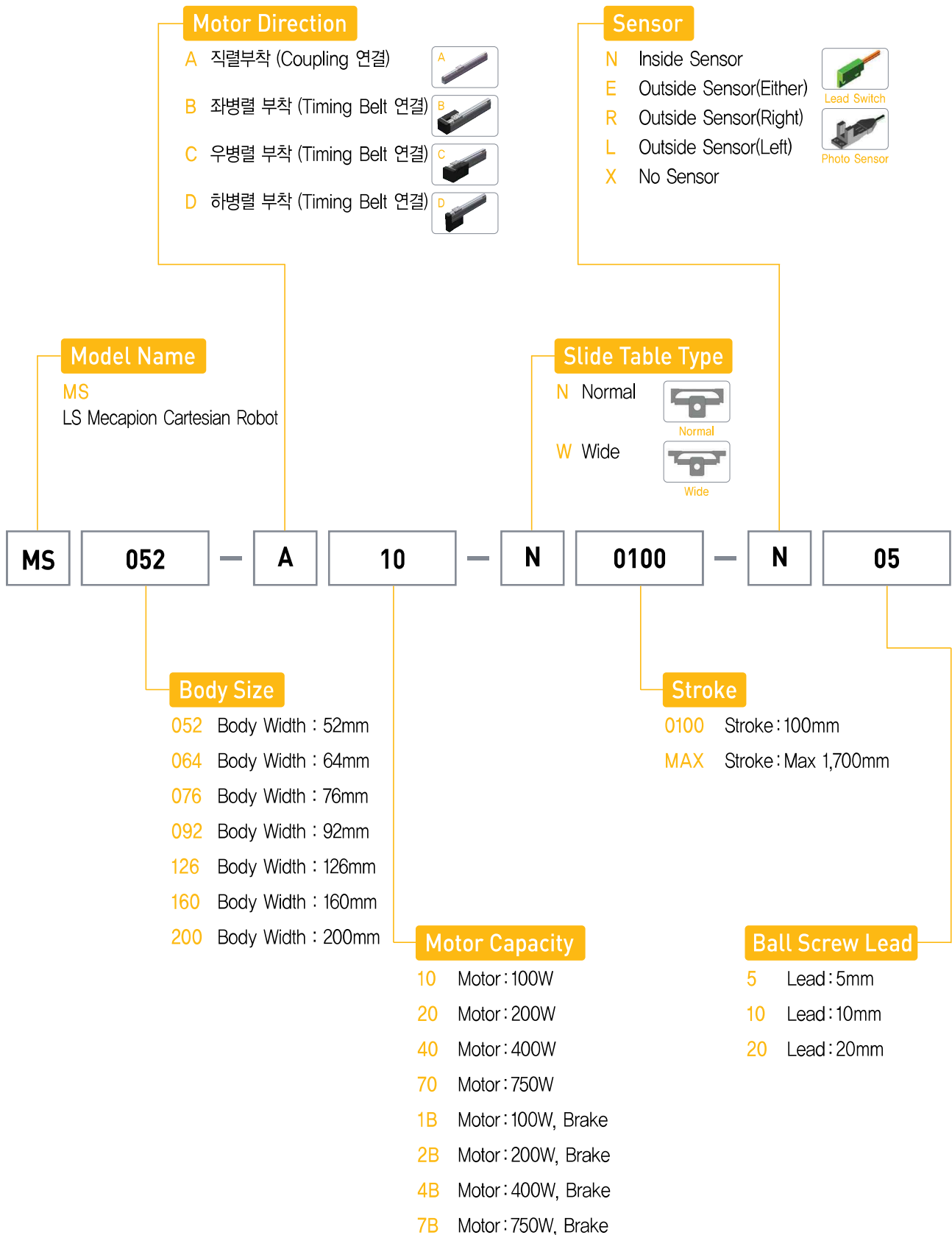
(설치 후 1~2개월 주기로 확인하여, 예방점검 및 일정계획을 수립하여 사용하시기 바랍니다.)

○ 시스템 구성



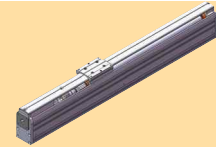
○ 형번구성

- MS Series
- LU Series
- MB Series
- LB Series
- LC Series
- LL Series
- LA Series
- LX Series
- LT Series



MS052-A

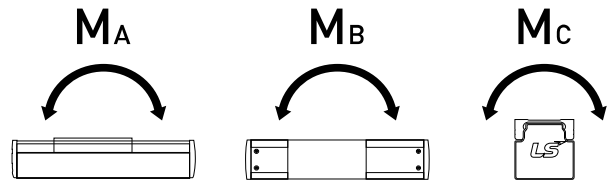
Body Size : 52mm / Stroke : ~1,000mm
 Servo Motor : 50, 100W



○ Specification

Motor Output [W]		50	100	
LM Guide		NO. 15 (1Rail - 2Block)		
Ball Screw Size/Grade		Ø15 / C7		
Ball Screw Lead [mm]		05	10	20
Rated Speed [mm/sec]		250	500	1000
Maximum Load Capacity [kgf]	Horizontal	15	15	7
	Vertical	9	7	3
Stroke [mm]		~1,000		
Repeatability [mm]		± 0.01		
Color		White / Black		

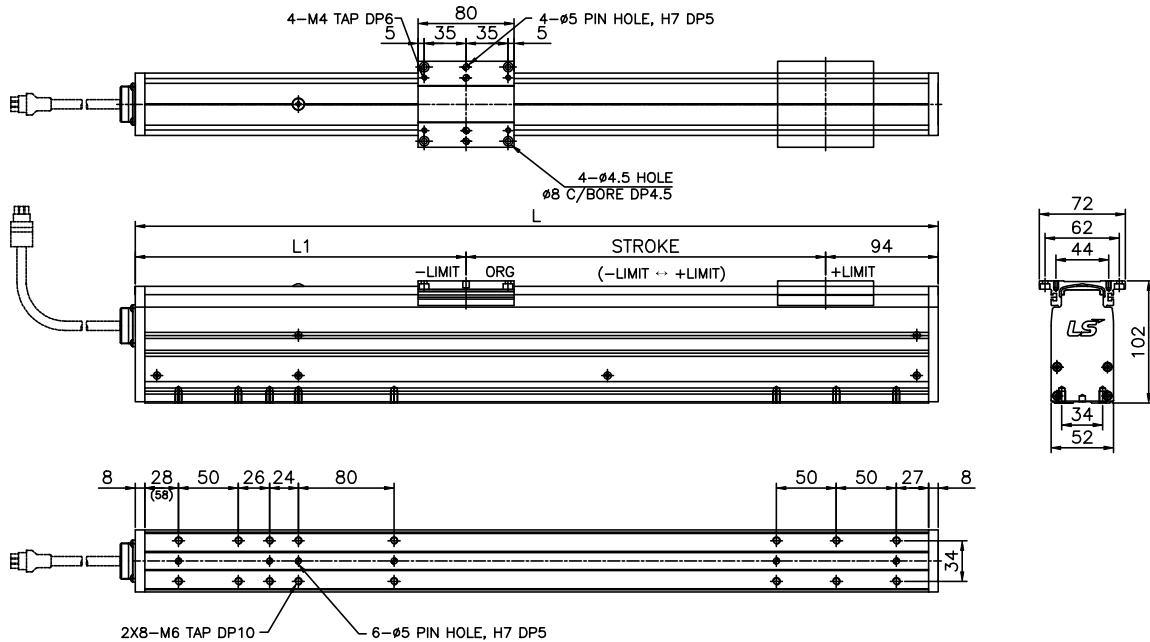
○ Statically Admissible State



Statically Admissible State [N-m]	MA	MB	MC
	224	143	65

○ Dimensions

[unit : mm]



Stroke [mm]		100	200	300	400	500	600	700	800	900	1000		
Weight [kg]		4.9	5.3	5.7	6.1	6.5	6.9	7.3	7.7	8.1	8.5		
Max Speed [mm/s]		1505	250						195	155	130	110	
		1510	500						390	310	260	220	
		1520	1000						780	620	520	440	
Body Length [mm]	Motor Type	Nomal	L	450	550	650	750	850	950	1050	1150	1250	1350
			L1	256									
	Brake	L	480	580	680	780	880	980	1080	1180	1280	1380	
		L1	286										

MS Series

LU Series

MB Series

LB Series

LC Series

LL Series

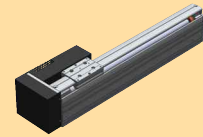
LA Series

LX Series

LT Series

MS052-B

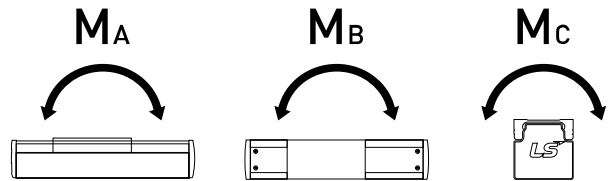
Body Size : 52mm / Stroke : ~1,000mm
 Servo Motor : 50, 100W



Specification

Motor Output[W]		50	100	
LM Guide		NO. 15 (1Rail - 2Block)		
Ball Screw Size/Grade		Ø15 / C7		
Ball Screw Lead[mm]		05	10	20
Rated Speed[mm/sec]		250	500	1000
Maximum Load Capacity[kgf]	Horizontal	15	15	7
	Vertical	9	7	3
Stroke[mm]		~1,000		
Repeatability[mm]		±0,01		
Color		White / Black		

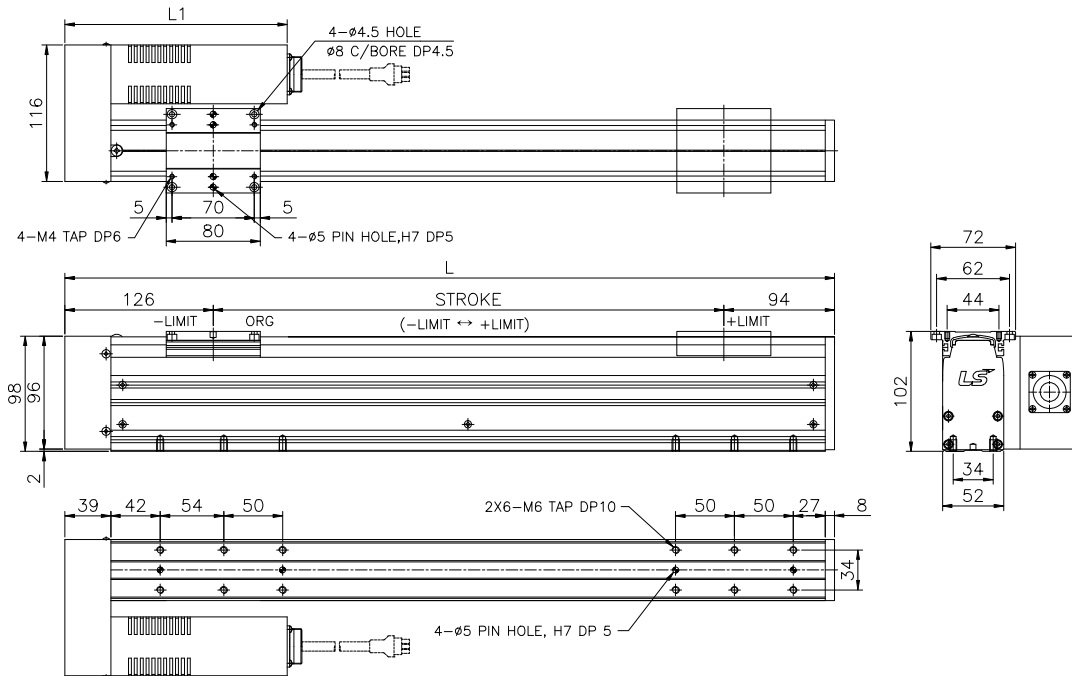
Statically Admissible State



Statically Admissible State[N-m]	MA	MB	MC
	224	143	65

Dimensions

[unit : mm]



Stroke[mm]		100	200	300	400	500	600	700	800	900	1000	
Weight[kg]		4.9	5.3	5.7	6.1	6.5	6.9	7.3	7.7	8.1	8.5	
Max Speed [mm/s]		1505	250					195	155	130	110	
		1510	500					390	310	260	220	
		1520	1000					780	620	520	440	
Body Length [mm]	Nomal	L	320	420	520	620	720	820	920	1020	1120	1220
		L1	189									
	Brake	L	320	420	520	620	720	820	920	1020	1120	1220
		L1	189									

MS052-C

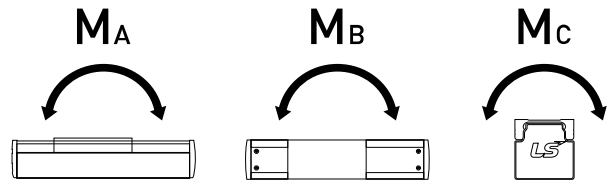
Body Size : 52mm / Stroke : ~1,000mm
 Servo Motor : 50, 100W



○ Specification

Motor Output [W]		50	100	
LM Guide		NO. 15 (1Rail - 2Block)		
Ball Screw Size/Grade		Ø15 / C7		
Ball Screw Lead [mm]		05	10	20
Rated Speed [mm/sec]		250	500	1000
Maximum Load Capacity [kgf]	Horizontal	15	15	7
	Vertical	9	7	3
Stroke [mm]		~1,000		
Repeatability [mm]		± 0,01		
Color		White / Black		

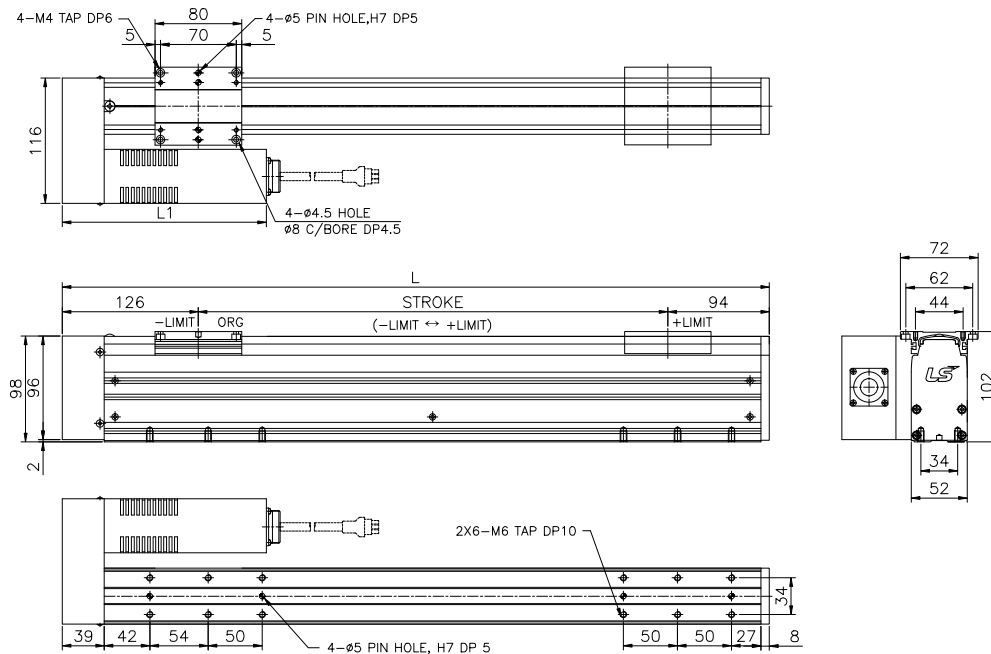
○ Statically Admissible State



Statically Admissible State [N-m]	MA	MB	MC
	224	143	65

○ Dimensions

[unit : mm]



Stroke [mm]		100	200	300	400	500	600	700	800	900	1000	
Weight [kg]		4.9	5.3	5.7	6.1	6.5	6.9	7.3	7.7	8.1	8.5	
Max Speed [mm/s]		1505	250					195	155	130	110	
		1510	500					390	310	260	220	
		1520	1000					780	620	520	440	
Body Length [mm]	Nomal	L	320	420	520	620	720	820	920	1020	1120	1220
		L1	189									
	Brake	L	320	420	520	620	720	820	920	1020	1120	1220
		L1	189									

MS Series

LU Series

MB Series

LB Series

LC Series

LL Series

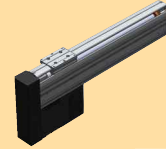
LA Series

LX Series

LT Series

MS052-D

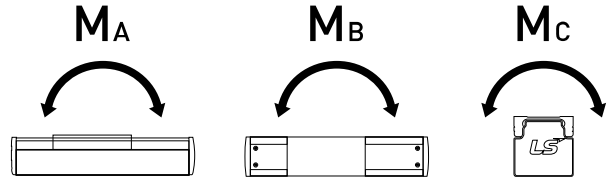
Body Size : 52mm / Stroke : ~1,000mm
 Servo Motor : 50, 100W



○ Specification

Motor Output[W]		50	100	
LM Guide		NO. 15 (1Rail - 2Block)		
Ball Screw Size/Grade		Ø15 / C7		
Ball Screw Lead[mm]		05	10	20
Rated Speed[mm/sec]		250	500	1000
Maximum Load Capacity[kgf]	Horizontal	15	15	7
	Vertical	9	7	3
Stroke[mm]		~1,000		
Repeatability[mm]		± 0,01		
Color		White / Black		

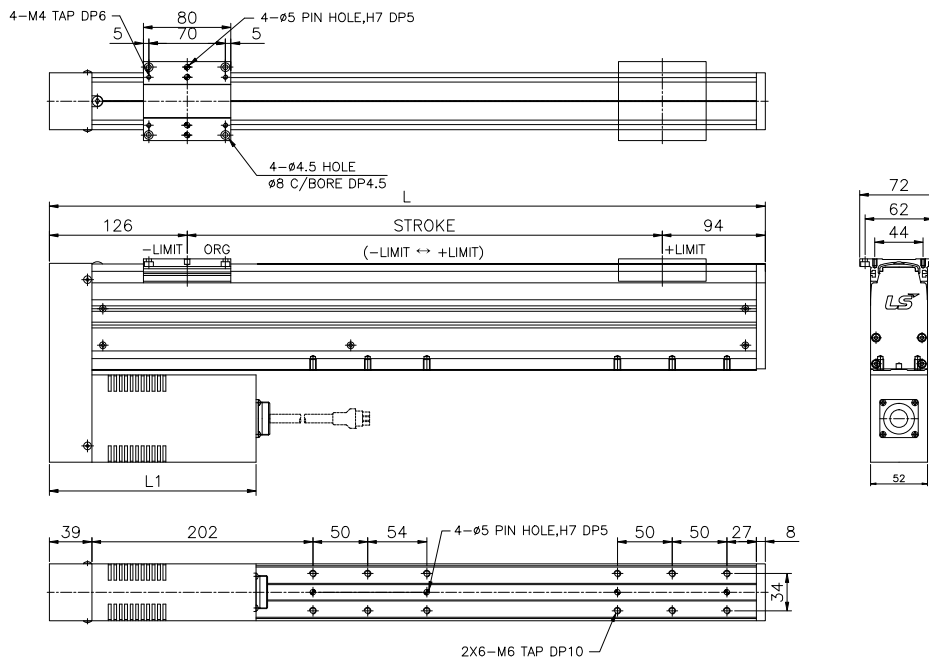
○ Statically Admissible State



Statically Admissible State[N-m]	MA	MB	MC
	224	143	65

○ Dimensions

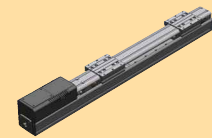
[unit : mm]



Stroke[mm]		100	200	300	400	500	600	700	800	900	1000	
Weight[kg]		4.9	5.3	5.7	6.1	6.5	6.9	7.3	7.7	8.1	8.5	
Max Speed [mm/s]	1505	250						195	155	130	110	
	1510	500						390	310	260	220	
	1520	1000						780	620	520	440	
Body Length [mm]	Normal	L	320	420	520	620	720	820	920	1020	1120	1220
		L1	189									
	Brake	L	320	420	520	620	720	820	920	1020	1120	1220
		L1	189									

MS064-A

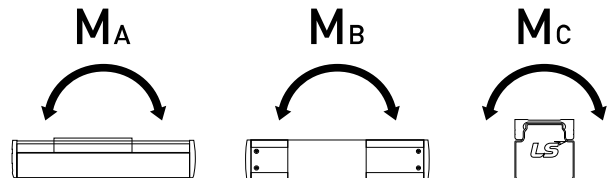
Body Size : 64mm / Stroke : ~750mm
 Servo Motor : 50, 100W



○ Specification

Motor Output [W]		50	100	
LM Guide		NO. 12 (1Rail - 2Block)		
Ball Screw Size/Grade		Ø12 / C7		
Ball Screw Lead [mm]		05	10	20
Rated Speed [mm/sec]		250	500	1000
Maximum Load Capacity [kgf]	Horizontal	16	16	4
	Vertical	7	5	3
Stroke [mm]		~ 750		
Repeatability [mm]		± 0.01		
Color		White / Black		

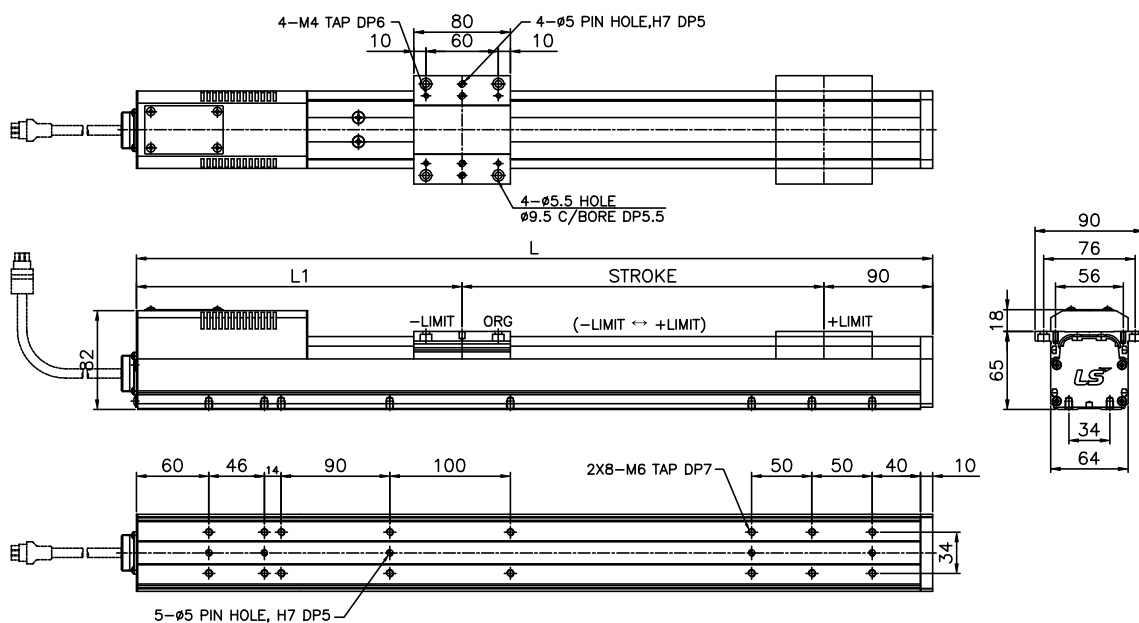
○ Statically Admissible State



Statically Admissible State [N-m]	MA	MB	MC
	143	143	66.5

○ Dimensions

[unit : mm]



Stroke [mm]		100	200	300	400	500	600	700	750	
Weight [kg]		4.2	4.7	5.2	5.7	6.2	6.7	7.2	7.5	
Max Speed [mm/s]	1205	250						195	170	
	1210	500						390	340	
	1220	1000						780	680	
Body Length [mm]	Nomal	L	460	560	660	760	860	960	1060	1110
		L1	270							
	Brake	L	490	590	690	790	890	990	1090	1190
		L1	300							

MS Series

LU Series

MB Series

LB Series

LC Series

LL Series

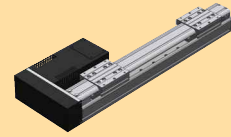
LA Series

LX Series

LT Series

MS064-B

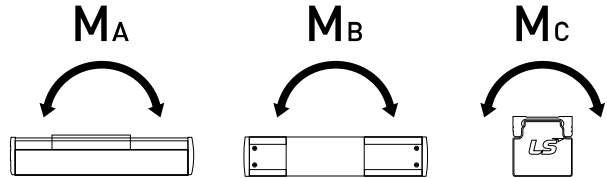
Body Size : 64mm / Stroke : ~750mm
 Servo Motor : 50, 100W



○ Specification

Motor Output[W]		50	100	
LM Guide		NO. 12 (1Rail - 2Block)		
Ball Screw Size/Grade		Ø12 / C7		
Ball Screw Lead[mm]		05	10	20
Rated Speed[mm/sec]		250	500	1000
Maximum Load Capacity[kgf]	Horizontal	16	16	4
	Vertical	7	5	3
Stroke[mm]		~ 750		
Repeatability[mm]		± 0,01		
Color		White / Black		

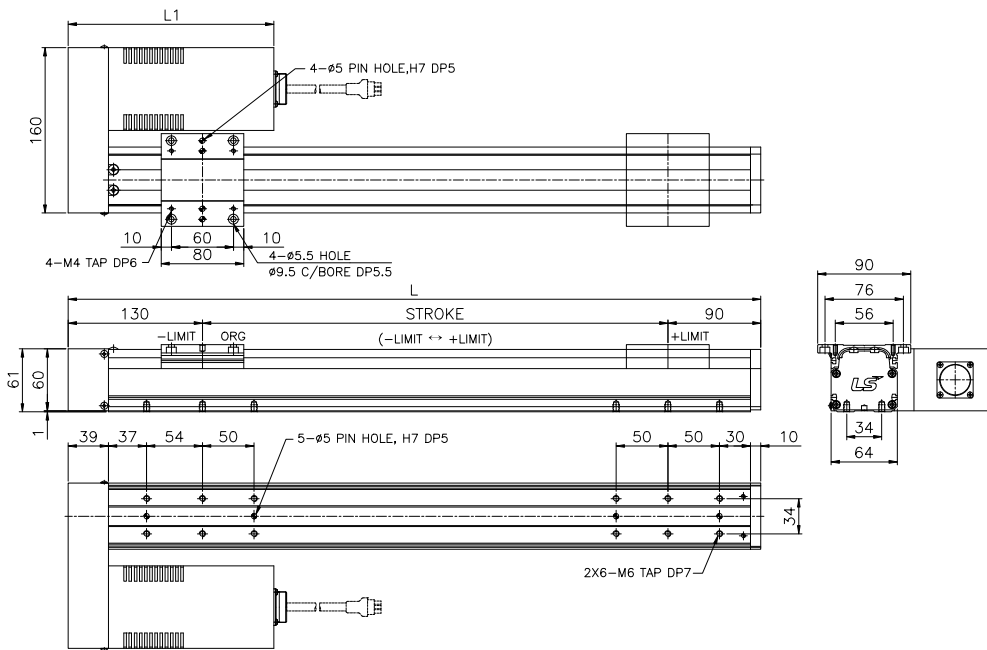
○ Statically Admissible State



Statically Admissible State[N-m]	MA	MB	MC
	143	143	66,5

○ Dimensions

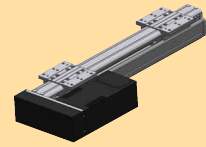
[unit : mm]



Stroke[mm]		100	200	300	400	500	600	700	750	
Weight[kg]		3.4	3.9	4.4	4.9	5.4	5.9	6.4	6.6	
Max Speed [mm/s]	1205	250						195	170	
	1210	500						390	340	
	1220	1000						780	680	
Body Length [mm]	Normal	L	320	420	520	620	720	820	920	1020
		L1	200							
	Brake	L	320	420	520	620	720	820	920	1020
		L1	200							

MS064-C

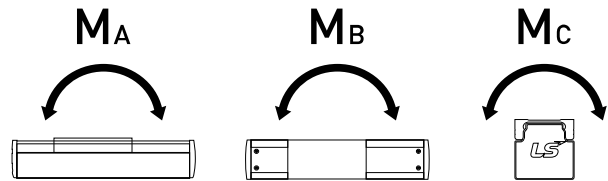
Body Size : 64mm / Stroke : ~750mm
 Servo Motor : 50, 100W



○ Specification

Motor Output[W]		50	100	
LM Guide		NO. 12 (1Rail - 2Block)		
Ball Screw Size/Grade		Ø12/C7		
Ball Screw Lead[mm]		05	10	20
Rated Speed[mm/sec]		250	500	1000
Maximum Load Capacity[kgf]	Horizontal	16	16	4
	Vertical	7	5	3
Stroke[mm]		~ 750		
Repeatability[mm]		± 0.01		
Color		White / Black		

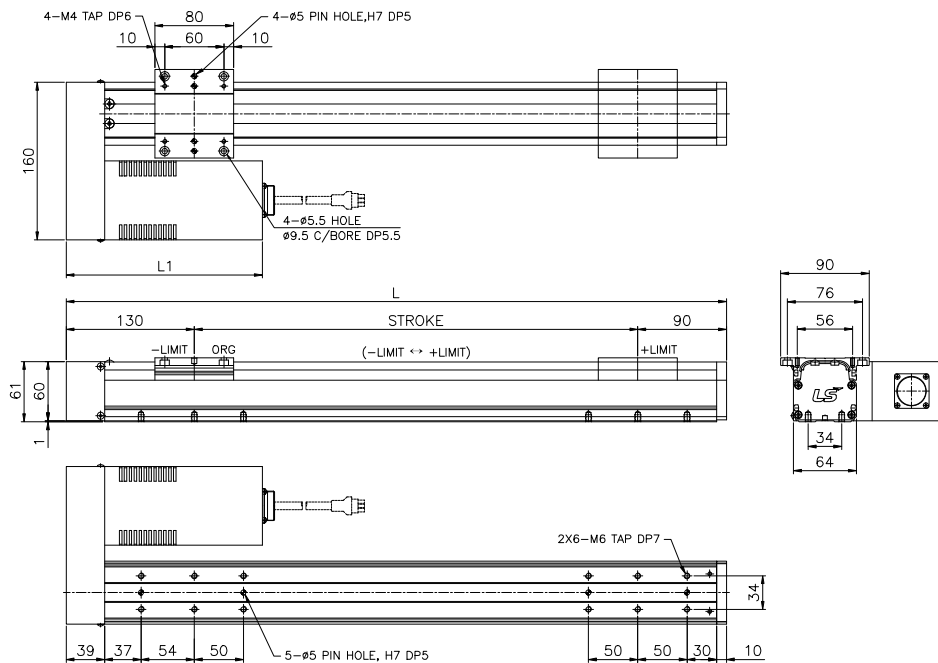
○ Statically Admissible State



Statically Admissible State[N-m]	MA	MB	MC
	143	143	66.5

○ Dimensions

[unit : mm]



Stroke[mm]		100	200	300	400	500	600	700	750	
Weight[kg]		3.4	3.9	4.4	4.9	5.4	5.9	6.4	6.6	
Max Speed [mm/s]	1205	250						195	170	
	1210	500						390	340	
	1220	1000						780	680	
Body Length [mm]	Nomal	L	320	420	520	620	720	820	920	1020
		L1	200							
	Brake	L	320	420	520	620	720	820	920	1020
		L1	200							

MS Series

LU Series

MB Series

LB Series

LC Series

LL Series

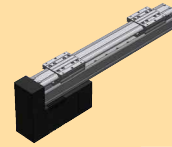
LA Series

LX Series

LT Series

MS064-D

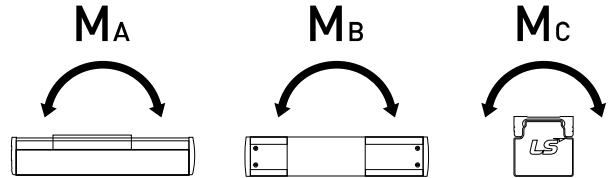
Body Size : 64mm / Stroke : ~750mm
 Servo Motor : 50, 100W



Specification

Motor Output[W]		50	100	
LM Guide		NO. 12 (1Rail - 2Block)		
Ball Screw Size/Grade		Ø12 / C7		
Ball Screw Lead[mm]		05	10	20
Rated Speed[mm/sec]		250	500	1000
Maximum Load Capacity[kgf]	Horizontal	16	16	4
	Vertical	7	5	3
Stroke[mm]		~ 750		
Repeatability[mm]		± 0,01		
Color		White / Black		

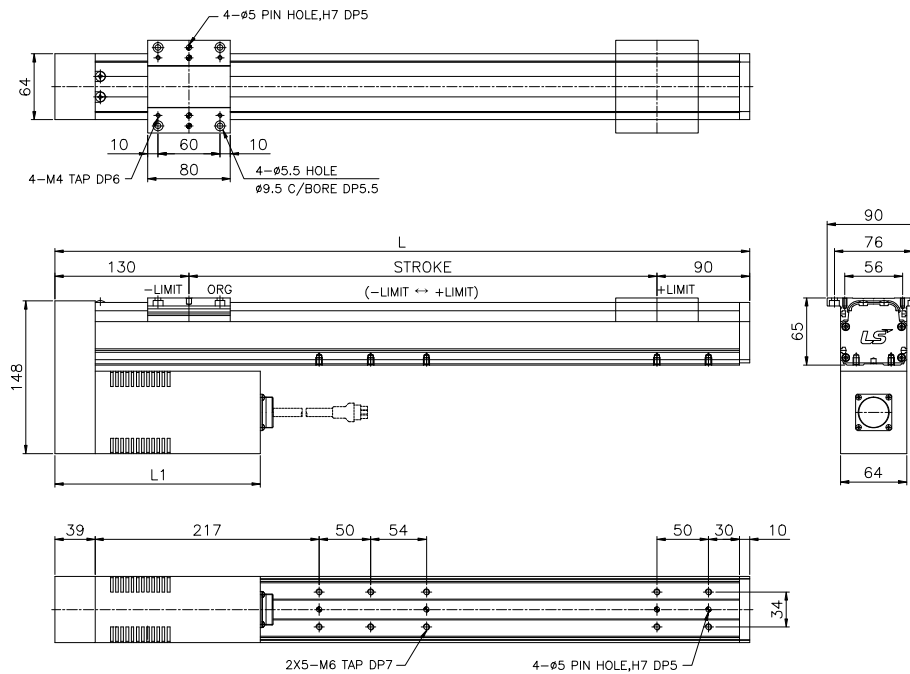
Statically Admissible State



Statically Admissible State[N-m]	MA	MB	MC
	143	143	66,5

Dimensions

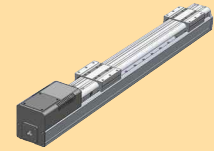
[unit : mm]



Stroke[mm]		100	200	300	400	500	600	700	750	
Weight[kg]		3.4	3.9	4.4	4.9	5.4	5.9	6.4	6.6	
Max Speed [mm/s]	1205	250						195	170	
	1210	500						390	340	
	1220	1000						780	680	
Body Length [mm]	Normal	L	320	420	520	620	720	820	920	1020
		L1	200							
	Brake	L	320	420	520	620	720	820	920	1020
		L1	200							

MS076-A

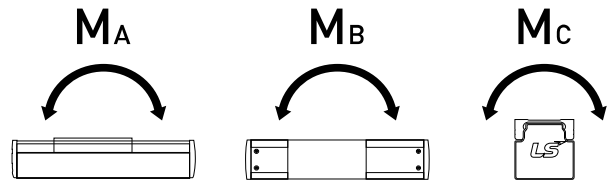
Body Size : 76mm / Stroke : ~1,000mm
 Servo Motor : 50, 100W



○ Specification

Motor Output [W]		50	100	
LM Guide		NO. 12 (1Rail - 2Block)		
Ball Screw Size/Grade		Ø15 / C7		
Ball Screw Lead [mm]		05	10	20
Rated Speed [mm/sec]		250	500	1000
Maximum Load Capacity [kgf]	Horizontal	20	20	7
	Vertical	9	7	3
Stroke [mm]		~1,000		
Repeatability [mm]		± 0,01		
Color		White / Black		

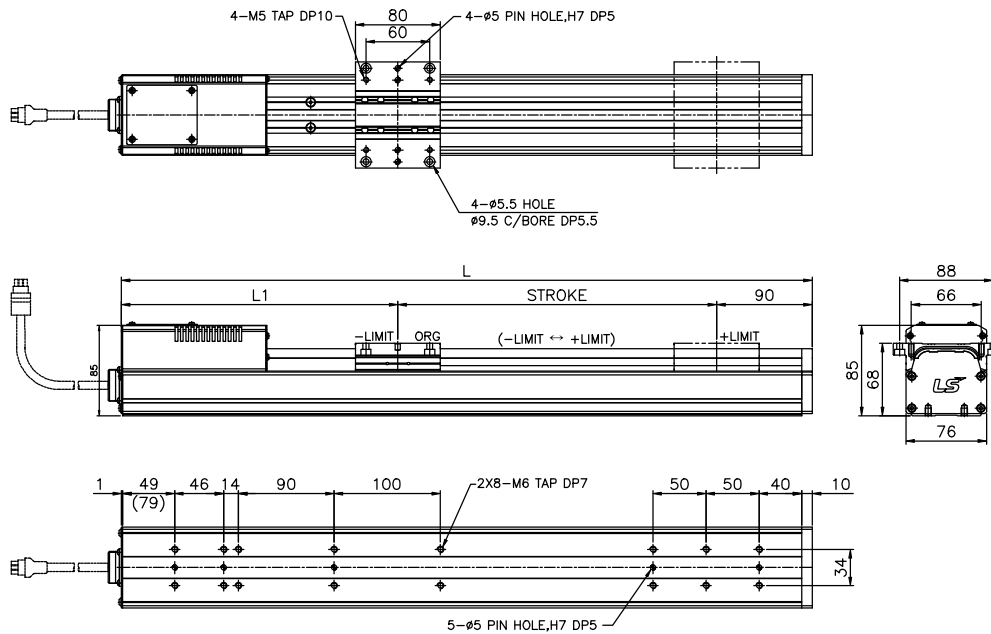
○ Statically Admissible State



Statically Admissible State [N-m]	MA	MB	MC
	143	143	66,5

○ Dimensions

[unit : mm]



Stroke [mm]		100	200	300	400	500	600	700	800	900	1000		
Weight [kg]		3.5	3.9	4.3	4.7	5.1	5.5	5.9	6.3	6.7	7.1		
Max Speed [mm/s]		1505	250					195	155	130	110		
		1510	500					390	310	260	220		
		1520	1000					780	620	520	440		
Body Length [mm]	Motor Type	Nomal	L	450	550	650	750	850	950	1050	1150	1250	1350
			L1	260									
	Brake	L	480	580	680	780	880	980	1080	1180	1280	1380	
		L1	290										

MS Series

LU Series

MB Series

LB Series

LC Series

LL Series

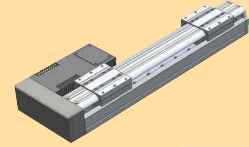
LA Series

LX Series

LT Series

MS076-B

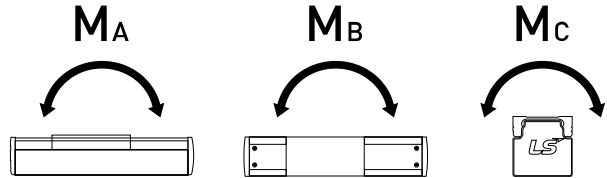
Body Size : 76mm / Stroke : ~1,000mm
 Servo Motor : 50, 100W



○ Specification

Motor Output[W]		50	100	
LM Guide		NO. 12 (1Rail - 2Block)		
Ball Screw Size/Grade		Ø15 / C7		
Ball Screw Lead[mm]		05	10	20
Rated Speed[mm/sec]		250	500	1000
Maximum Load Capacity[kgf]	Horizontal	20	20	7
	Vertical	9	7	3
Stroke[mm]		~1,000		
Repeatability[mm]		± 0,01		
Color		White / Black		

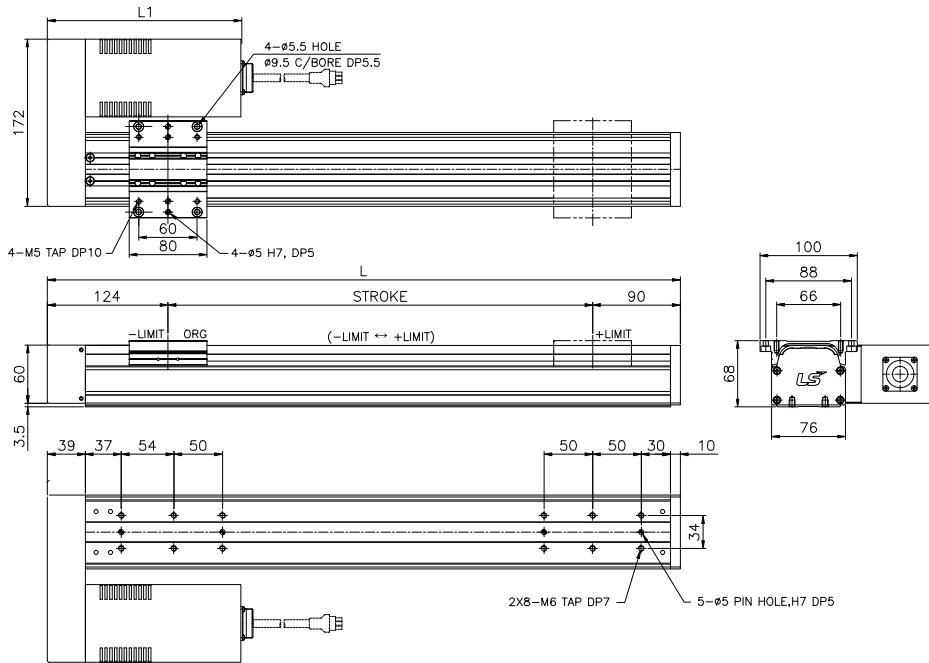
○ Statically Admissible State



Statically Admissible State[N-m]	MA	MB	MC
	143	143	66,5

○ Dimensions

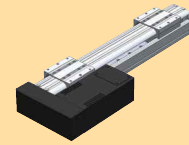
[unit : mm]



Stroke[mm]		100	200	300	400	500	600	700	800	900	1000
Weight[kg]		4.0	4.4	4.8	5.2	5.8	6	6.4	6.8	7.2	7.6
Max Speed [mm/s]	1505	250						195	155	130	110
	1510	500						390	310	260	220
	1520	1000						780	620	520	440
Body Length [mm]	L	314	414	514	614	714	814	914	1014	1114	1214
	Normal	L1	200								
			220								

MS076-C

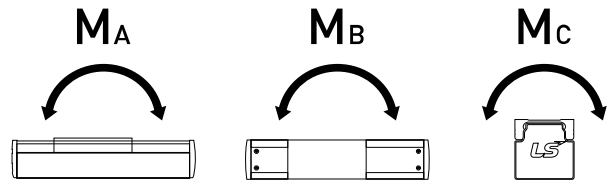
Body Size : 76mm / Stroke : ~1,000mm
 Servo Motor : 50, 100W



○ Specification

Motor Output [W]		50	100	
LM Guide		NO. 12 (1Rail - 2Block)		
Ball Screw Size/Grade		Ø15 / C7		
Ball Screw Lead [mm]		05	10	20
Rated Speed [mm/sec]		250	500	1000
Maximum Load Capacity [kgf]	Horizontal	20	20	7
	Vertical	9	7	3
Stroke [mm]		~1,000		
Repeatability [mm]		± 0,01		
Color		White / Black		

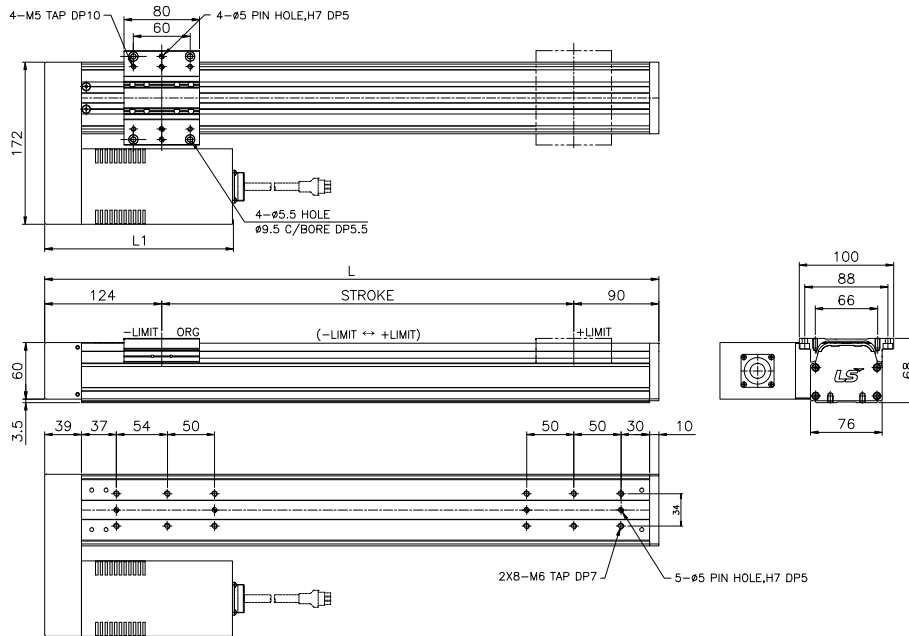
○ Statically Admissible State



Statically Admissible State [N-m]	MA	MB	MC
	143	143	66,5

○ Dimensions

[unit : mm]



Stroke [mm]		100	200	300	400	500	600	700	800	900	1000	
Weight [kg]		4.0	4.4	4.8	5.2	5.8	6	6.4	6.8	7.2	7.6	
Max Speed [mm/s]	1505	250						195	155	130	110	
	1510	500						390	310	260	220	
	1520	1000						780	620	520	440	
Body Length [mm]	L		314	414	514	614	714	814	914	1014	1114	1214
	Normal	L1	200									
			220									

MS Series

LU Series

MB Series

LB Series

LC Series

LL Series

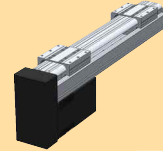
LA Series

LX Series

LT Series

MS076-D

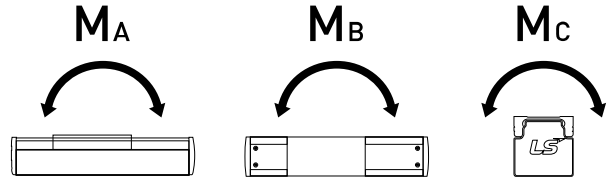
Body Size : 76mm / Stroke : ~1,000mm
 Servo Motor : 50, 100W



Specification

Motor Output[W]		50	100	
LM Guide		NO. 12 (1Rail - 2Block)		
Ball Screw Size/Grade		Ø15 / C7		
Ball Screw Lead[mm]		05	10	20
Rated Speed[mm/sec]		250	500	1000
Maximum Load Capacity[kgf]	Horizontal	20	20	7
	Vertical	9	7	3
Stroke[mm]		~1,000		
Repeatability[mm]		± 0,01		
Color		White / Black		

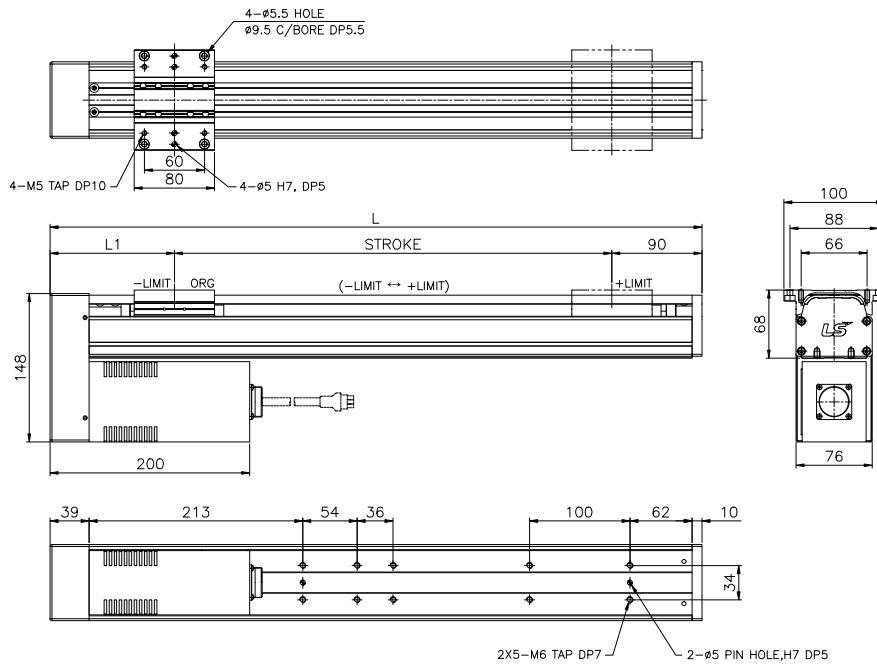
Statically Admissible State



Statically Admissible State[N-m]	MA	MB	MC
	143	143	66,5

Dimensions

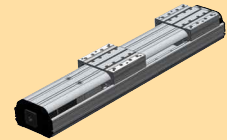
[unit : mm]



Stroke[mm]		100	200	300	400	500	600	700	800	900	1000
Weight[kg]		4.0	4.4	4.8	5.2	5.8	6	6.4	6.8	7.2	7.6
Max Speed [mm/s]	1505	250						195	155	130	110
	1510	500						390	310	260	220
	1520	1000						780	620	520	440
Body Length [mm]	L	314	414	514	614	714	814	914	1014	1114	1214
	Normal	L1	200								
			220								

MS092-A10

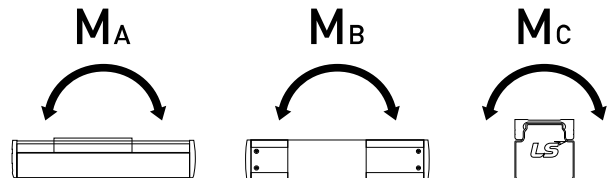
Body Size : 92mm / Stroke : ~1,000mm
 Servo Motor : 50, 100W



○ Specification

Motor Output [W]		50	100	
LM Guide		NO. 15 (1Rail - 2Block)		
Ball Screw Size/Grade		Ø15 / C7		
Ball Screw Lead [mm]		05	10	20
Rated Speed [mm/sec]		250	500	1000
Maximum Load Capacity [kgf]	Horizontal	25	23	7
	Vertical	7	5	3
Stroke [mm]		~900		
Repeatability [mm]		± 0.01		
Color		White / Black		

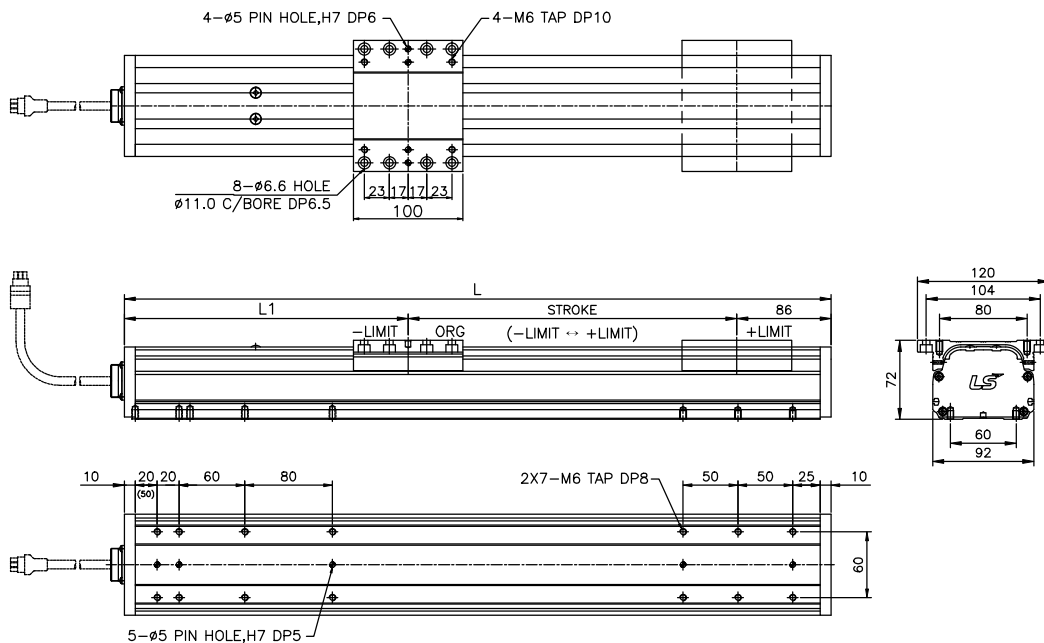
○ Statically Admissible State



Statically Admissible State [N-m]	MA	MB	MC
	232	232	176

○ Dimensions

[unit : mm]



Stroke [mm]		100	200	300	400	500	600	700	800	900	1000		
Weight [kg]		5.2	6	6.8	7.6	8.4	9.2	10	10.8	11.6	12.4		
Max Speed [mm/s]		1505	250					195	155	130	110		
		1510	500					390	310	260	220		
		1520	1000					780	620	520	440		
Body Length [mm]	Motor Type	Nomal	L	460	560	660	760	860	960	1060	1160	1260	1360
			L1	274									
	Brake	L	490	590	690	790	890	990	1090	1190	1290	1390	
		L1	304										

MS Series

LU Series

MB Series

LB Series

LC Series

LL Series

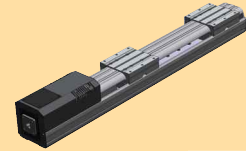
LA Series

LX Series

LT Series

MS092-A20

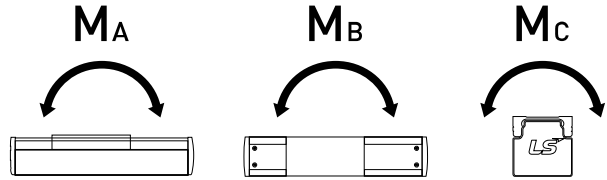
Body Size : 92mm / Stroke : ~1,000mm
Servo Motor : 200W



Specification

Motor Output[W]		200		
LM Guide		NO. 15 (1Rail - 2Block)		
Ball Screw Size/Grade		Ø15 / C7		
Ball Screw Lead[mm]		05	10	20
Rated Speed[mm/sec]		250	500	1000
Maximum Load Capacity[kgf]	Horizontal	25	23	7
	Vertical	7	5	3
Stroke[mm]		~900		
Repeatability[mm]		± 0,01		
Color		White / Black		

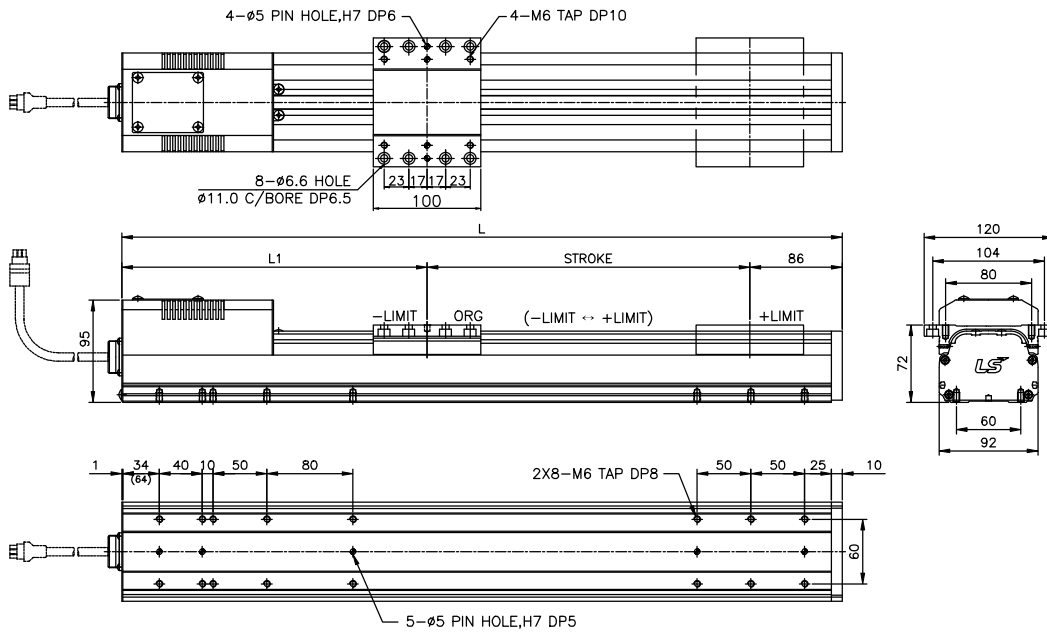
Statically Admissible State



Statically Admissible State[N-m]	MA	MB	MC
	232	232	176

Dimensions

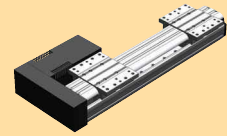
[unit : mm]



Stroke[mm]		100	200	300	400	500	600	700	800	900	1000	
Weight[kg]		5.2	6	6.8	7.6	8.4	9.2	10	10.8	11.6	12.4	
Max Speed [mm/s]	1505	250						195	155	130	110	
	1510	500						390	310	260	220	
	1520	1000						780	620	520	440	
Body Length [mm]	Nomal	L	470	570	670	770	870	970	1070	1170	1270	1370
		L1	284									
	Brake	L	500	600	700	800	900	1000	1100	1200	1300	1400
		L1	314									

MS092-B

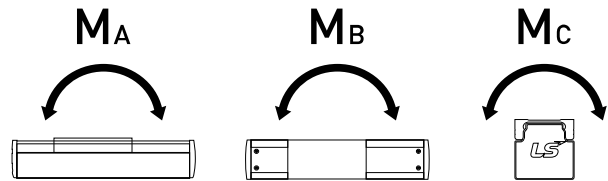
Body Size : 92mm / Stroke : ~1,000mm
 Servo Motor : 100, 200W



○ Specification

Motor Output [W]		100	200	
LM Guide		NO. 15 (1Rail - 2Block)		
Ball Screw Size/Grade		Ø15 / C7		
Ball Screw Lead [mm]		05	10	20
Rated Speed [mm/sec]		250	500	1000
Maximum Load Capacity [kgf]	Horizontal	25	23	7
	Vertical	7	5	3
Stroke [mm]		~900		
Repeatability [mm]		± 0,01		
Color		White / Black		

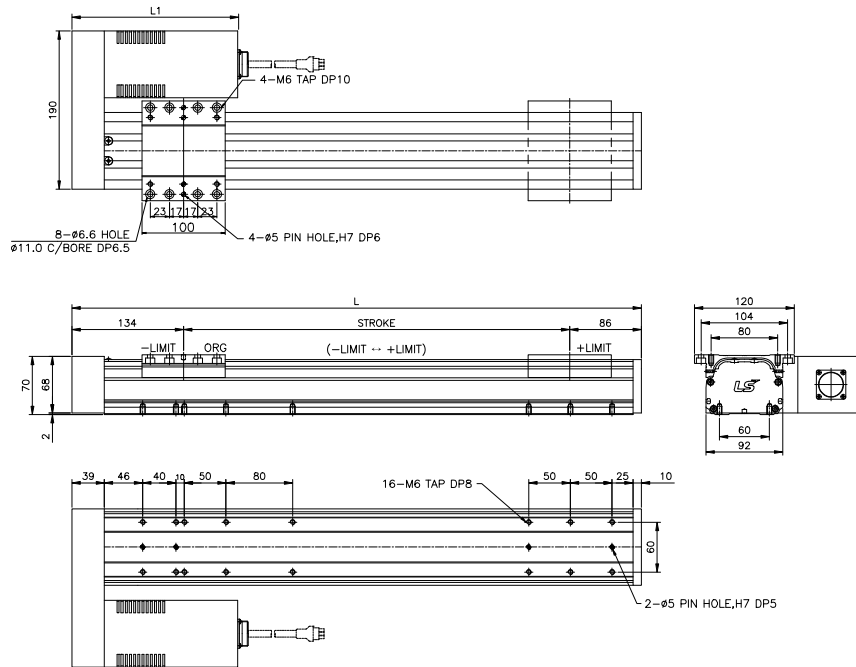
○ Statically Admissible State



Statically Admissible State [N-m]	MA	MB	MC
	232	232	176

○ Dimensions

[unit : mm]



Stroke [mm]		100	200	300	400	500	600	700	800	900	1000	
Weight [kg]		5.3	6.1	6.9	7.7	8.5	9.3	10.1	10.9	11.7	12.5	
Max Speed [mm/s]	1505	250						195	155	130	110	
	1510	500						390	310	260	220	
	1520	1000						780	620	520	440	
Body Length [mm]	L	320	420	520	620	720	820	920	1020	1120	1220	
	Normal	L1	200 (220)						() : 200W Motor			
			200 (220)						() : 200W Motor			

MS Series

LU Series

MB Series

LB Series

LC Series

LL Series

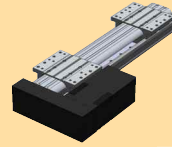
LA Series

LX Series

LT Series

MS092-C

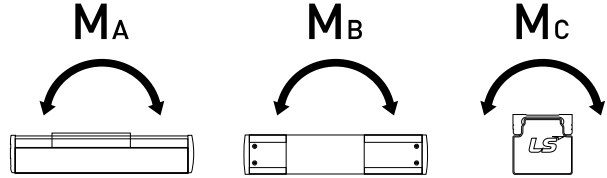
Body Size : 92mm / Stroke : ~1,000mm
 Servo Motor : 100, 200W



Specification

Motor Output[W]		100	200	
LM Guide		NO. 15 (1Rail - 2Block)		
Ball Screw Size/Grade		Ø15 / C7		
Ball Screw Lead[mm]		05	10	20
Rated Speed[mm/sec]		250	500	1000
Maximum Load Capacity[kgf]	Horizontal	25	23	7
	Vertical	7	5	3
Stroke[mm]		~900		
Repeatability[mm]		± 0,01		
Color		White / Black		

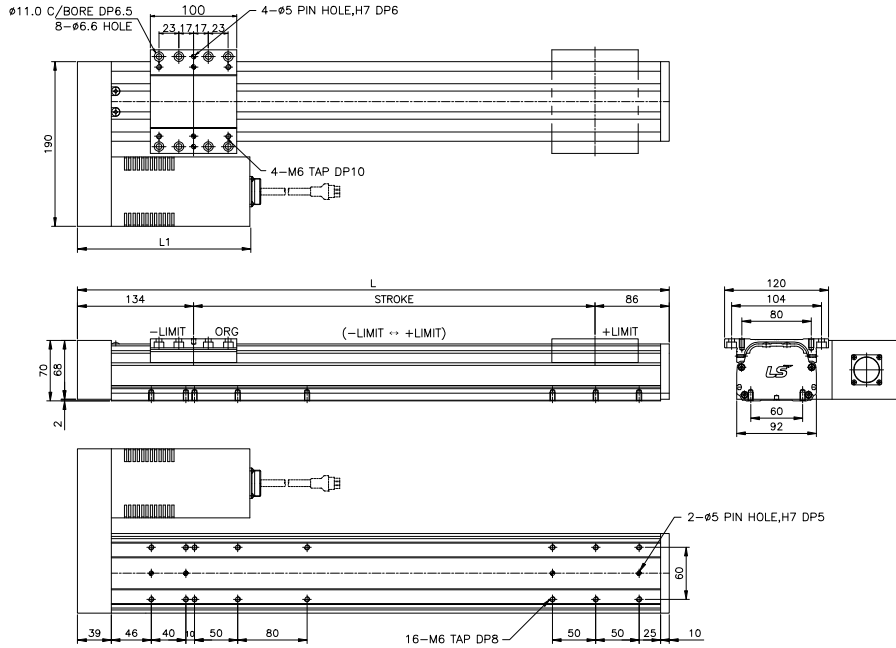
Statically Admissible State



Statically Admissible State[N-m]	MA	MB	MC
	232	232	176

Dimensions

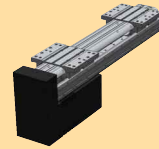
[unit : mm]



Stroke[mm]		100	200	300	400	500	600	700	800	900	1000	
Weight[kg]		5.3	6.1	6.9	7.7	8.5	9.3	10.1	10.9	11.7	12.5	
Max Speed [mm/s]	1505	250						195	155	130	110	
	1510	500						390	310	260	220	
	1520	1000						780	620	520	440	
Body Length [mm]	L	320	420	520	620	720	820	920	1020	1120	1220	
	Normal	L1	200 (220)					() : 200W Motor				
			200 (220)					() : 200W Motor				

MS092-D

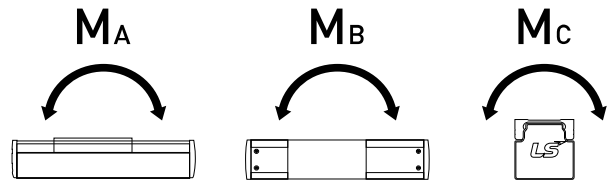
Body Size : 92mm / Stroke : ~1,000mm
 Servo Motor : 100, 200W



Specification

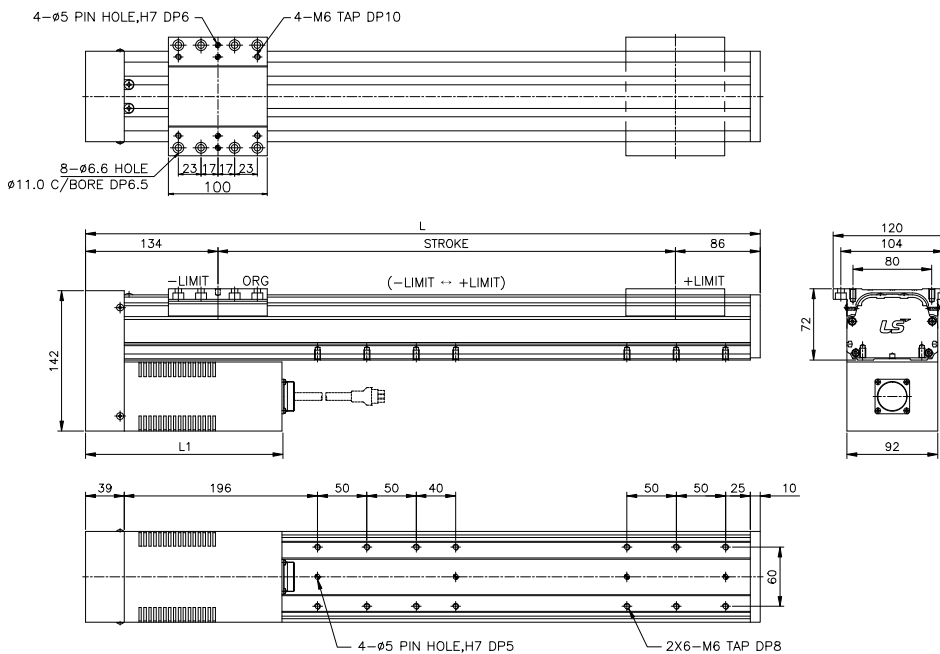
Motor Output [W]		100	200	
LM Guide		NO. 15 (1Rail - 2Block)		
Ball Screw Size/Grade		Ø15 / C7		
Ball Screw Lead [mm]		05	10	20
Rated Speed [mm/sec]		250	500	1000
Maximum Load Capacity [kgf]	Horizontal	25	23	7
	Vertical	7	5	3
Stroke [mm]		~900		
Repeatability [mm]		± 0.01		
Color		White / Black		

Statically Admissible State



Statically Admissible State [N-m]	MA	MB	MC
	232	232	176

Dimensions



[unit : mm]

※ () : 200W Motor

Stroke [mm]		100	200	300	400	500	600	700	800	900	1000	
Weight [kg]		5.3	6.1	6.9	7.7	8.5	9.3	10.1	10.9	11.7	12.5	
Max Speed [mm/s]	1505	250						195	155	130	110	
	1510	500						390	310	260	220	
	1520	1000						780	620	520	440	
Body Length [mm]	L	320	420	520	620	720	820	920	1020	1120	1220	
	Normal	L1	200 (220)						() : 200W Motor			
			200 (220)						() : 200W Motor			

MS Series

LU Series

MB Series

LB Series

LC Series

LL Series

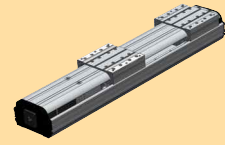
LA Series

LX Series

LT Series

MS126-A

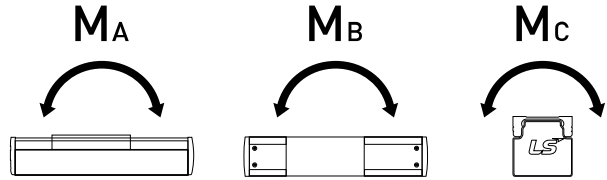
Body Size : 126mm / Stroke : ~1,000mm
 Servo Motor : 200, 400W



Specification

Motor Output[W]		200	400	
LM Guide		NO. 15 (2Rail - 4Block)		
Ball Screw Size/Grade		Ø15 / C7		
Ball Screw Lead[mm]		05	10	20
Rated Speed[mm/sec]		250	500	1000
Maximum Load Capacity[kgf]	Horizontal	55	50	30
	Vertical	25	21	9
Stroke[mm]		~1,000		
Repeatability[mm]		±0,01		
Color		White / Black		

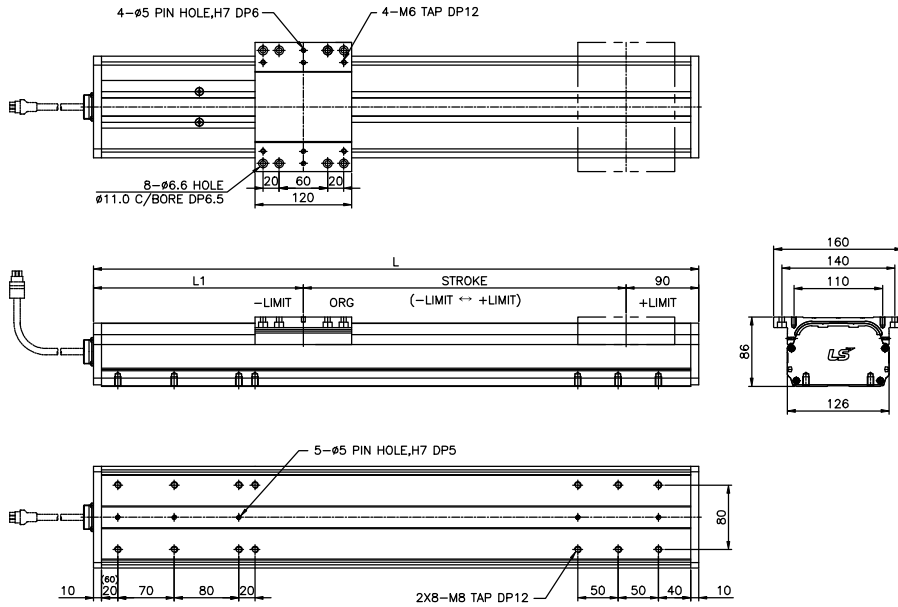
Statically Admissible State



Statically Admissible State[N-m]	MA	MB	MC
	825	513	216

Dimensions

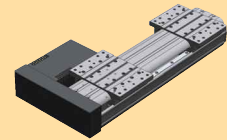
[unit : mm]



Stroke[mm]		100	200	300	400	500	600	700	800	900	1000	
Weight[kg]		7.6	8.7	9.8	10.9	12	13.1	14.2	15.3	16.4	17.5	
Max Speed [mm/s]	1505	250						195	155	130	110	
	1510	500						390	310	260	220	
	1520	1000						780	620	520	440	
Body Length [mm]	Nomal	L	480	580	680	780	880	980	1080	1180	1280	1380
		L1	290 (330)						() : 400W Motor			
	Brake	L	520	620	720	820	920	1020	1120	1220	1320	1420
		L1	330 (370)						() : 400W Motor			

MS126-B

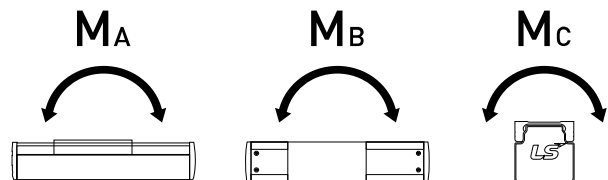
Body Size : 126mm / Stroke : ~1,000mm
 Servo Motor : 200, 400W



Specification

Motor Output [W]		200	400	
LM Guide		NO. 15 (2Rail - 4Block)		
Ball Screw Size/Grade		Ø15 / C7		
Ball Screw Lead [mm]		05	10	20
Rated Speed [mm/sec]		250	500	1000
Maximum Load Capacity [kgf]	Horizontal	55	50	30
	Vertical	25	21	9
Stroke [mm]		~1,000		
Repeatability [mm]		± 0.01		
Color		White / Black		

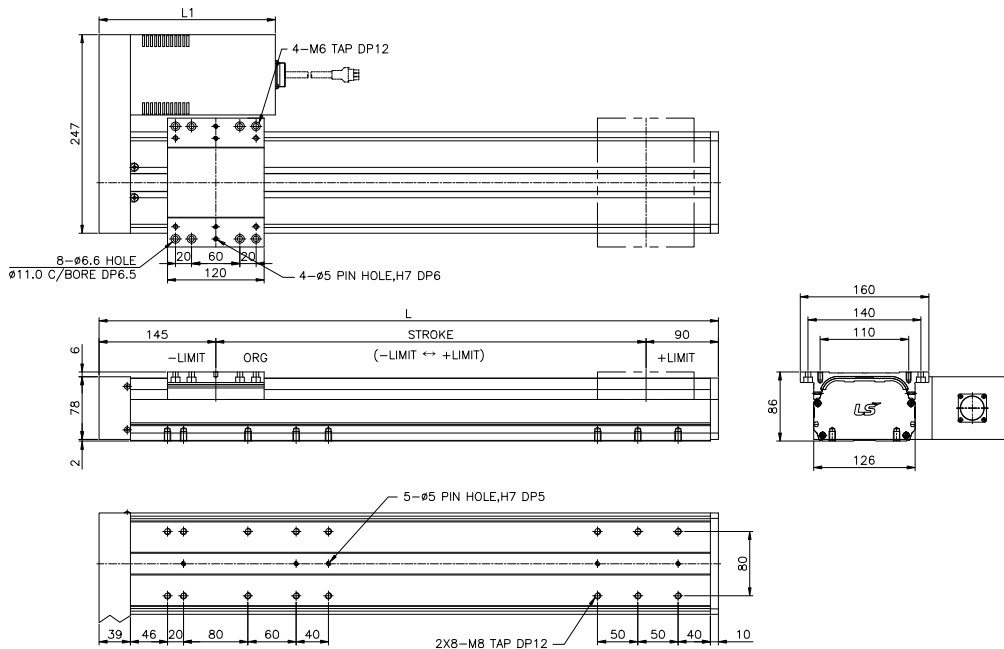
Statically Admissible State



Statically Admissible State [N-m]	MA	MB	MC
	825	513	216

Dimensions

[unit : mm]



Stroke [mm]		100	200	300	400	500	600	700	800	900	1000
Weight [kg]		7.5	8.6	9.7	10.8	11.9	13	14.1	15.2	16.3	17.4
Max Speed [mm/s]	1505	250						195	155	130	110
	1510	500						390	310	260	220
	1520	1000						780	620	520	440
Body Length [mm]	L	335	435	535	635	735	835	935	1035	1135	1235
	Normal	L1	220								
			240								

MS Series

LU Series

MB Series

LB Series

LC Series

LL Series

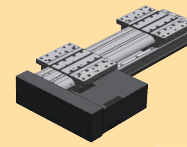
LA Series

LX Series

LT Series

MS126-C

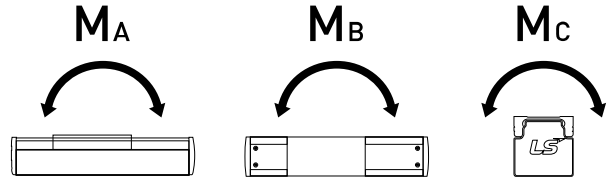
Body Size : 126mm / Stroke : ~1,000mm
 Servo Motor : 200, 400W



Specification

Motor Output[W]		200	400	
LM Guide		NO. 15 (2Rail - 4Block)		
Ball Screw Size/Grade		Ø15 / C7		
Ball Screw Lead[mm]		05	10	20
Rated Speed[mm/sec]		250	500	1000
Maximum Load Capacity[kgf]	Horizontal	55	50	30
	Vertical	25	21	9
Stroke[mm]		~1,000		
Repeatability[mm]		± 0,01		
Color		White / Black		

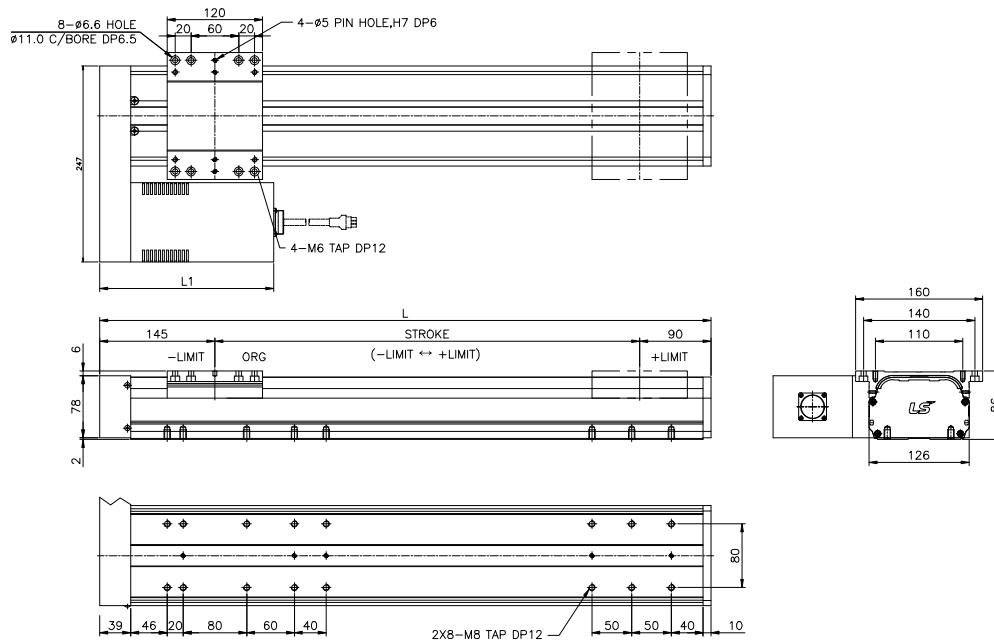
Statically Admissible State



Statically Admissible State[N-m]	MA	MB	MC
	825	513	216

Dimensions

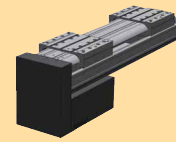
[unit: mm]



Stroke[mm]		100	200	300	400	500	600	700	800	900	1000
Weight[kg]		7.5	8.6	9.7	10.8	11.9	13	14.1	15.2	16.3	17.4
Max Speed [mm/s]	1505	250						195	155	130	110
	1510	500						390	310	260	220
	1520	1000						780	620	520	440
Body Length [mm]	L	335	435	535	635	735	835	935	1035	1135	1235
	Normal	L1	220								
			240								

MS126-D

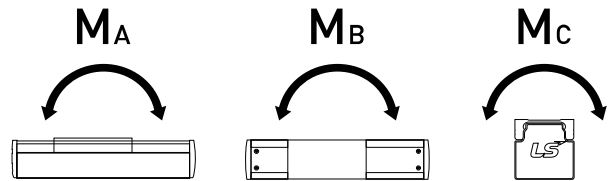
Body Size : 126mm / Stroke : ~1,000mm
 Servo Motor : 200, 400W



○ Specification

Motor Output[W]		200	400	
LM Guide		NO. 15 (2Rail - 4Block)		
Ball Screw Size/Grade		Ø15 / C7		
Ball Screw Lead[mm]		05	10	20
Rated Speed[mm/sec]		250	500	1000
Maximum Load Capacity[kgf]	Horizontal	55	50	30
	Vertical	25	21	9
Stroke[mm]		~1,000		
Repeatability[mm]		± 0,01		
Color		White / Black		

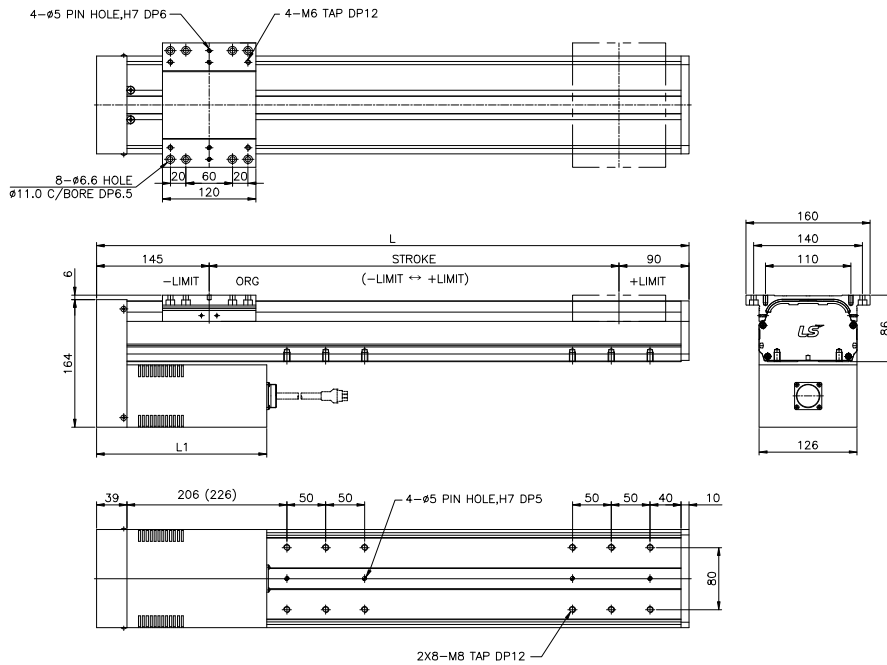
○ Statically Admissible State



Statically Admissible State[N-m]	MA	MB	MC
	825	513	216

○ Dimensions

[unit : mm]



Stroke[mm]		100	200	300	400	500	600	700	800	900	1000
Weight[kg]		7.5	8.6	9.7	10.8	11.9	13	14.1	15.2	16.3	17.4
Max Speed [mm/s]	1505	250						195	155	130	110
	1510	500						390	310	260	220
	1520	1000						780	620	520	440
Body Length [mm]	L	335	435	535	635	735	835	935	1035	1135	1235
	Normal	L1	220								
			240								

MS Series

LU Series

MB Series

LB Series

LC Series

LL Series

LA Series

LX Series

LT Series

MS160-A

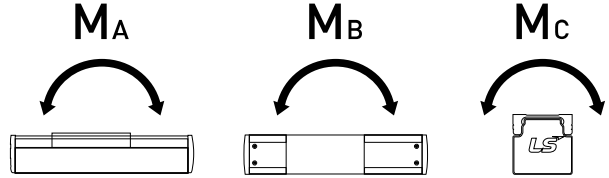
Body Size : 160mm / Stroke : ~1,500mm
 Servo Motor : 400, 750W



Specification

Motor Output[W]		400	750	
LM Guide		NO. 20 (2Rail - 4Block)		
Ball Screw Size/Grade		Ø20 / C7		
Ball Screw Lead[mm]		05	10	20
Rated Speed[mm/sec]		250	500	1000
Maximum Load Capacity[kgf]	Horizontal	85	80	50
	Vertical	35	32	18
Stroke[mm]		~1,500		
Repeatability[mm]		± 0,01		
Color		White / Black		

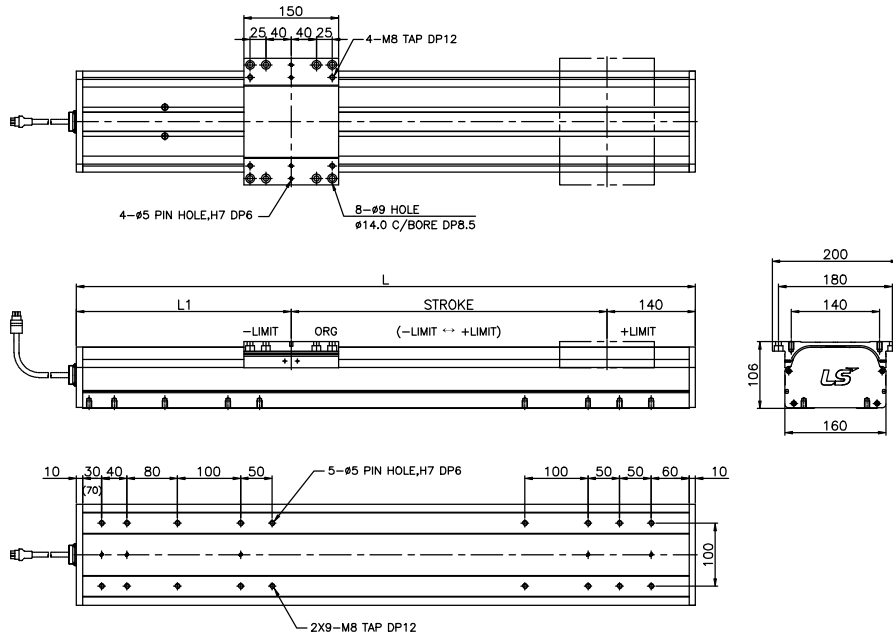
Statically Admissible State



Statically Admissible State[N-m]	MA	MB	MC
	1244	778	388

Dimensions

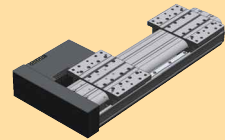
[unit : mm]



Stroke[mm]		200	300	400	500	600	700	800	900	1000	1100	1200	1300	1400	1500	
Weight[kg]		18.3	20	21.7	23.4	25.1	26.8	28.5	30.2	31.9	33.6	35.3	37	38.7	40.4	
Max Speed [mm/s]		2005	250				195	155	130	110	90	80	70	60	50	
		2010	500				390	310	260	220	180	160	140	120	110	
		2020	1000				780	620	520	440	370	320	280	240	220	
Body Length [mm]	Normal	L	680	780	880	980	1080	1180	1280	1380	1480	1580	1680	1780	1880	1980
		L1	340 (380)										() : 750W Motor			
	Brake	L	720	820	920	1020	1120	1220	1320	1420	1520	1620	1720	1820	1920	2020
		L1	380 (420)										() : 750W Motor			

MS160-B

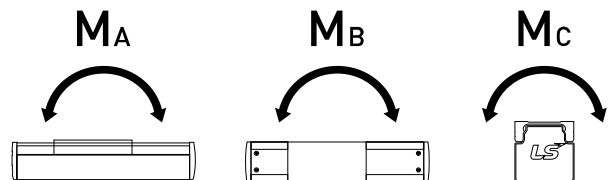
Body Size : 160mm / Stroke : ~1,500mm
 Servo Motor : 400, 750W



○ Specification

Motor Output[W]		400	750	
LM Guide		NO. 20 (2Rail - 4Block)		
Ball Screw Size/Grade		Ø20 / C7		
Ball Screw Lead[mm]		05	10	20
Rated Speed[mm/sec]		250	500	1000
Maximum Load Capacity[kgf]	Horizontal	85	80	50
	Vertical	35	32	18
Stroke[mm]		~1,500		
Repeatability[mm]		± 0,01		
Color		White / Black		

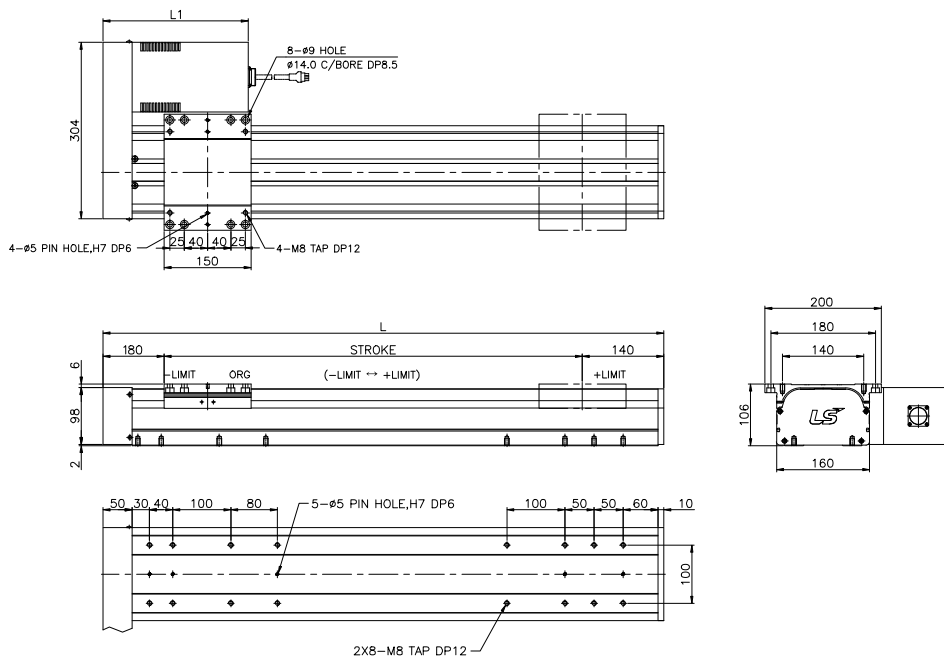
○ Statically Admissible State



Statically Admissible State[N-m]	MA	MB	MC
	1244	778	388

○ Dimensions

[unit : mm]



Stroke[mm]		200	300	400	500	600	700	800	900	1000	1100	1200	1300	1400	1500	
Weight[kg]		17.5	19.2	20.9	22.6	24.8	26	27.7	29.4	31.1	32.8	34.5	36.2	37.9	39.6	
Max Speed [mm/s]	2005	250					195	155	130	110	90	80	70	60	50	
	2010	500					390	310	260	220	180	160	140	120	110	
	2020	1000					780	620	520	440	370	320	280	240	220	
Body Length [mm]	L	520	620	720	820	920	1020	1120	1220	1320	1420	1520	1620	1720	1820	
	Normal	L1	250 (280)									() : 750W Motor				
			250 (280)									() : 750W Motor				

MS Series

LU Series

MB Series

LB Series

LC Series

LL Series

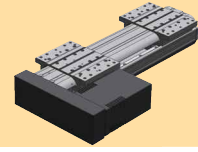
LA Series

LX Series

LT Series

MS160-C

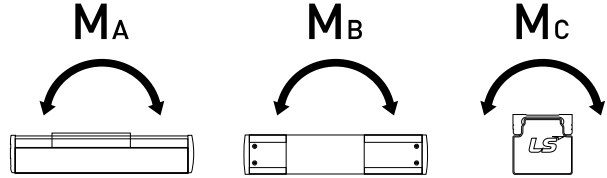
Body Size : 160mm / Stroke : ~1,500mm
 Servo Motor : 400, 750W



Specification

Motor Output[W]		400	750	
LM Guide		NO. 20 (2Rail - 4Block)		
Ball Screw Size/Grade		Ø20 / C7		
Ball Screw Lead[mm]		05	10	20
Rated Speed[mm/sec]		250	500	1000
Maximum Load Capacity[kgf]	Horizontal	85	80	50
	Vertical	35	32	18
Stroke[mm]		~1,500		
Repeatability[mm]		±0,01		
Color		White / Black		

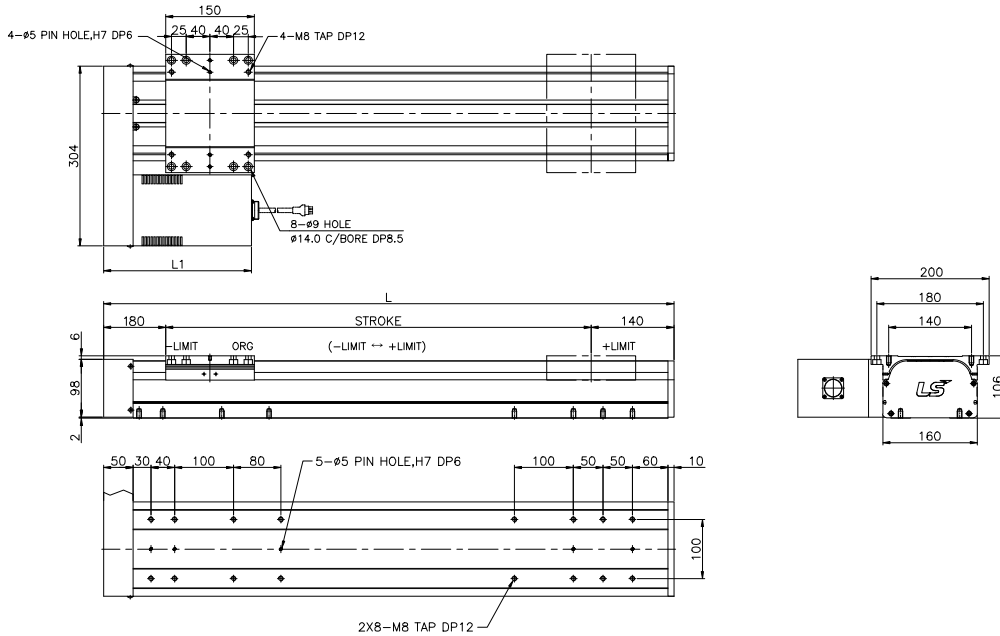
Statically Admissible State



Statically Admissible State[N-m]	MA	MB	MC
	1244	778	388

Dimensions

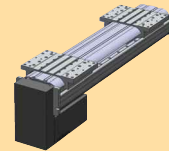
[unit : mm]



Stroke[mm]		200	300	400	500	600	700	800	900	1000	1100	1200	1300	1400	1500		
Weight[kg]		17.5	19.2	20.9	22.6	24.8	26	27.7	29.4	31.1	32.8	34.5	36.2	37.9	39.6		
Max Speed [mm/s]	2005	250					195	155	130	110	90	80	70	60	50		
	2010	500					390	310	260	220	180	160	140	120	110		
	2020	1000					780	620	520	440	370	320	280	240	220		
Body Length [mm]	L		520	620	720	820	920	1020	1120	1220	1320	1420	1520	1620	1720	1820	
	Normal	L1							250 (280)			() : 750W Motor					
									250 (280)			() : 750W Motor					

MS160-D

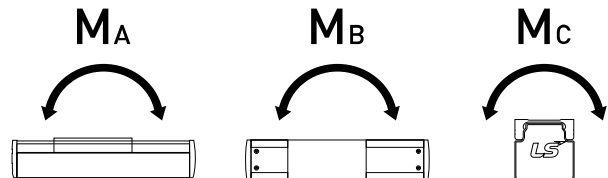
Body Size : 160mm / Stroke : ~1,500mm
 Servo Motor : 400, 750W



Specification

Motor Output[W]		400	750	
LM Guide		NO. 20 (2Rail - 4Block)		
Ball Screw Size/Grade		Ø20 / C7		
Ball Screw Lead[mm]		05	10	20
Rated Speed[mm/sec]		250	500	1000
Maximum Load Capacity[kgf]	Horizontal	85	80	50
	Vertical	35	32	18
Stroke[mm]		~1,500		
Repeatability[mm]		± 0,01		
Color		White / Black		

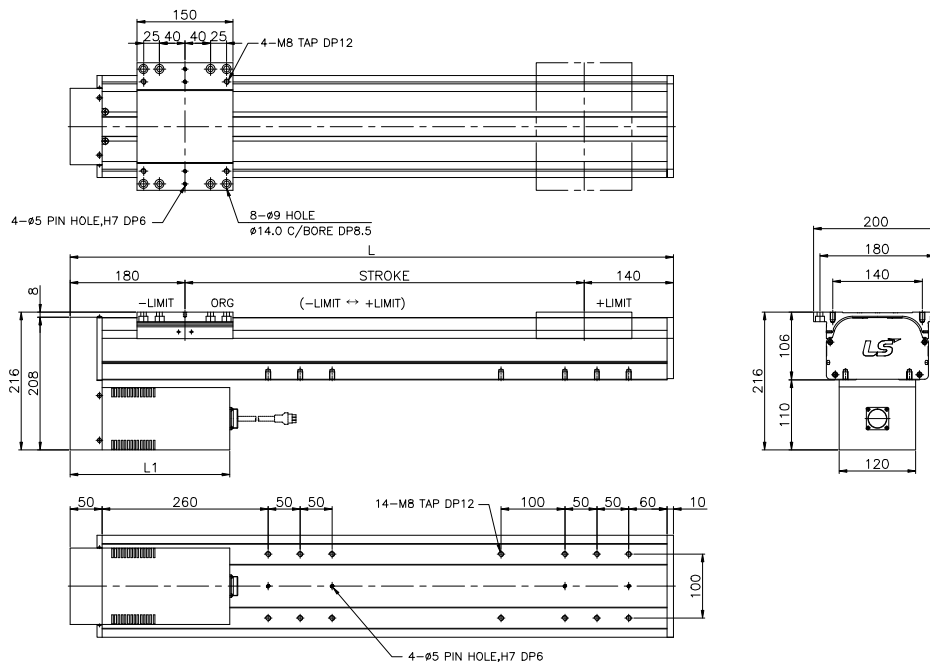
Statically Admissible State



Statically Admissible State[N-m]	MA	MB	MC
	1244	778	388

Dimensions

[unit : mm]



Stroke[mm]		200	300	400	500	600	700	800	900	1000	1100	1200	1300	1400	1500		
Weight[kg]		17.5	19.2	20.9	22.6	24.8	26	27.7	29.4	31.1	32.8	34.5	36.2	37.9	39.6		
Max Speed [mm/s]	2005	250					195	155	130	110	90	80	70	60	50		
	2010	500					390	310	260	220	180	160	140	120	110		
	2020	1000					780	620	520	440	370	320	280	240	220		
Body Length [mm]	L	520	620	720	820	920	1020	1120	1220	1320	1420	1520	1620	1720	1820		
	Normal	L1						250 (280)					() : 750W Motor				
								250 (280)					() : 750W Motor				

MS Series

LU Series

MB Series

LB Series

LC Series

LL Series

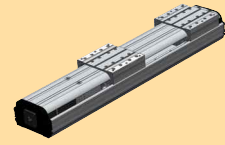
LA Series

LX Series

LT Series

MS200-A

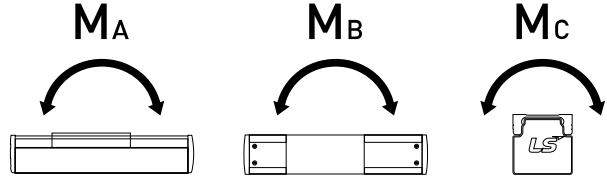
Body Size : 200mm / Stroke : ~1,700mm
Servo Motor : 750W



○ Specification

Motor Output[W]		750		
LM Guide		NO. 25 (2Rail - 4Block)		
Ball Screw Size/Grade		Ø20 / C7		
Ball Screw Lead[mm]		05	10	20
Rated Speed[mm/sec]		250	500	1000
Maximum Load Capacity[kgf]	Horizontal	120	120	100
	Vertical	52	52	30
Stroke[mm]		~1,700		
Repeatability[mm]		± 0,01		
Color		White / Black		

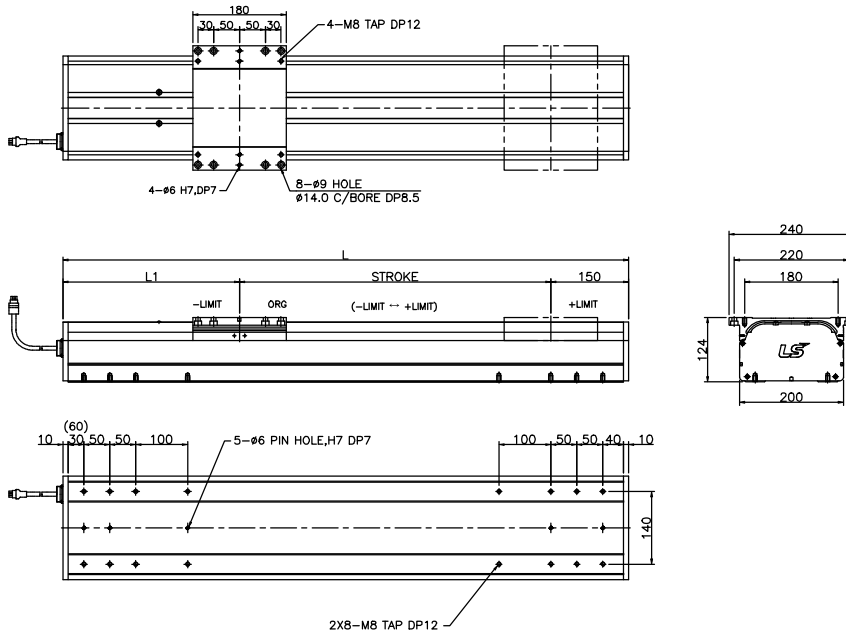
○ Statically Admissible State



Statically Admissible State[N-m]	MA	MB	MC
	2432	1507	710

○ Dimensions

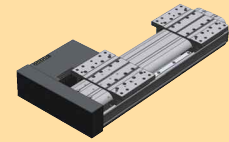
[unit : mm]



Stroke[mm]		200	300	400	500	600	700	800	900	1000	1100	1200	1300	1400	1500	1600	1700	
Weight[kg]		28.7	31.1	33.5	35.9	38.3	40.7	43.1	45.5	47.9	50.3	52.7	55.1	57.5	59.9	62.3	64.7	
Max Speed [mm/s]	2005	250					195	155	130	110	90	80	70	60	50	48	43	
	2010	500					390	310	260	220	180	160	140	120	110	100	90	
	2020	1000					780	620	520	440	370	320	280	240	220	200	180	
Body Length [mm]	Normal	L	690	790	890	990	1090	1190	1290	1390	1490	1590	1690	1790	1890	1990	2090	2190
		L1	340															
	Brake	L	720	820	920	1020	1120	1220	1320	1420	1520	1620	1720	1820	1920	2020	2120	2220
		L1	370															

MS200-B

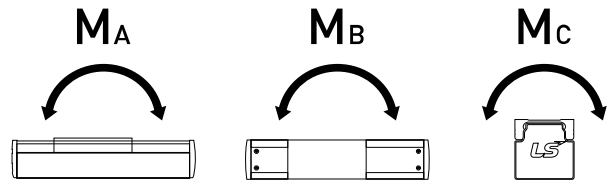
Body Size : 200mm / Stroke : ~1,700mm
 Servo Motor : 750W



○ Specification

Motor Output[W]		750		
LM Guide		NO. 25 (2Rail - 4Block)		
Ball Screw Size/Grade		Ø20 / C7		
Ball Screw Lead[mm]		05	10	20
Rated Speed[mm/sec]		250	500	1000
Maximum Load Capacity[kgf]	Horizontal	120	120	100
	Vertical	52	52	30
Stroke[mm]		~1,700		
Repeatability[mm]		± 0,01		
Color		White / Black		

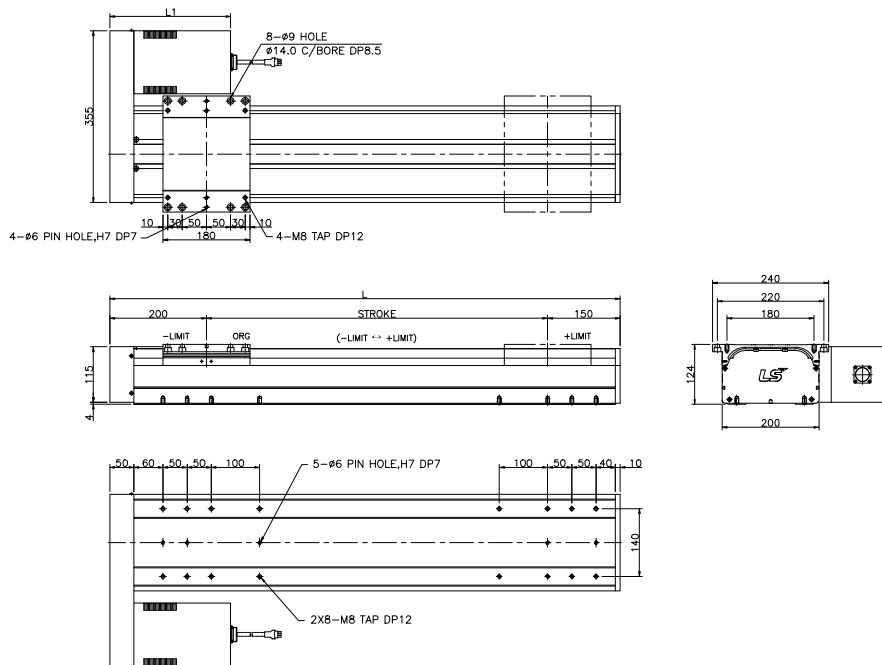
○ Statically Admissible State



Statically Admissible State[N-m]	MA	MB	MC
	2432	1507	710

○ Dimensions

[unit : mm]



Stroke[mm]		200	300	400	500	600	700	800	900	1000	1100	1200	1300	1400	1500	1600	1700	
Weight[kg]		25.2	27.6	30	32.4	34.8	37.2	39.6	42	44.4	46.8	49.2	51.6	54	56.4	58.8	61.2	
Max Speed [mm/s]	2005	250					195	155	130	110	90	80	70	60	50	48	43	
	2010	500					390	310	260	220	180	160	140	120	110	100	90	
	2020	1000					780	620	520	440	370	320	280	240	220	200	180	
Body Length [mm]	L		550	650	750	850	950	1050	1150	1250	1350	1450	1550	1650	1750	1850	1950	2050
	Normal	L1	250															
			280															

MS Series

LU Series

MB Series

LB Series

LC Series

LL Series

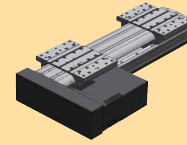
LA Series

LX Series

LT Series

MS200-C

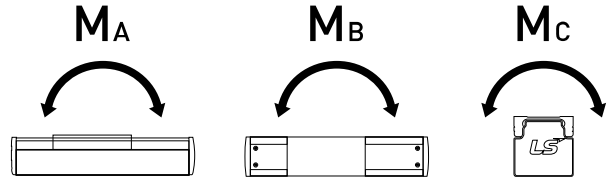
Body Size : 200mm / Stroke : ~1,700mm
Servo Motor : 750W



○ Specification

Motor Output[W]		750		
LM Guide		NO. 25 (2Rail - 4Block)		
Ball Screw Size/Grade		Ø20 / C7		
Ball Screw Lead[mm]		05	10	20
Rated Speed[mm/sec]		250	500	1000
Maximum Load Capacity[kgf]	Horizontal	120	120	100
	Vertical	52	52	30
Stroke[mm]		~1,700		
Repeatability[mm]		± 0,01		
Color		White / Black		

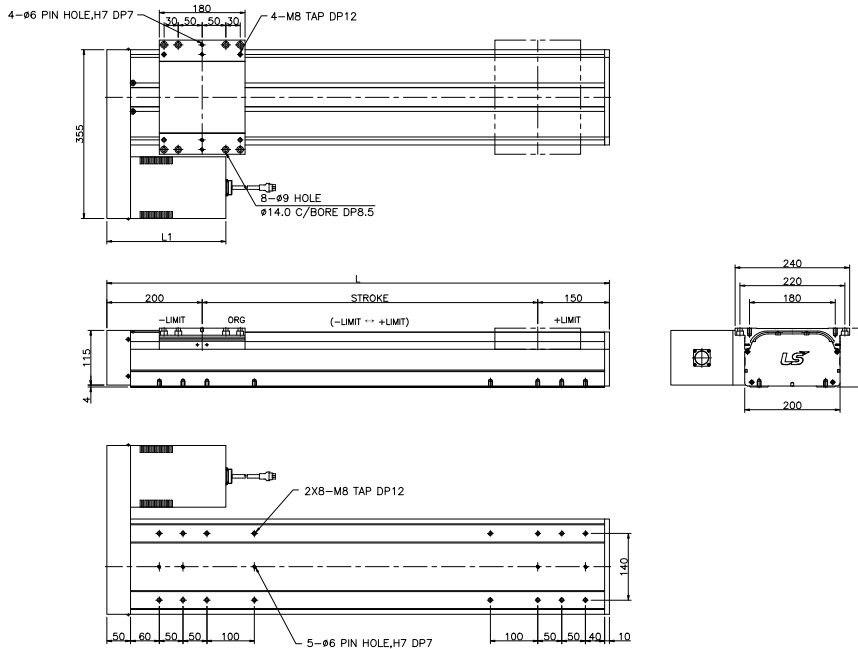
○ Statically Admissible State



Statically Admissible State[N·m]	MA	MB	MC
	2432	1507	710

○ Dimensions

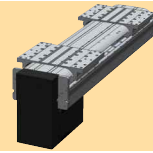
[unit : mm]



Stroke[mm]		200	300	400	500	600	700	800	900	1000	1100	1200	1300	1400	1500	1600	1700
Weight[kg]		25.2	27.6	30	32.4	34.8	37.2	39.6	42	44.4	46.8	49.2	51.6	54	56.4	58.8	61.2
Max Speed [mm/s]	2005	250					195	155	130	110	90	80	70	60	50	48	43
	2010	500					390	310	260	220	180	160	140	120	110	100	90
	2020	1000					780	620	520	440	370	320	280	240	220	200	180
Body Length [mm]	L	550	650	750	850	950	1050	1150	1250	1350	1450	1550	1650	1750	1850	1950	2050
	Normal	L1	250														
			280														

MS200-D

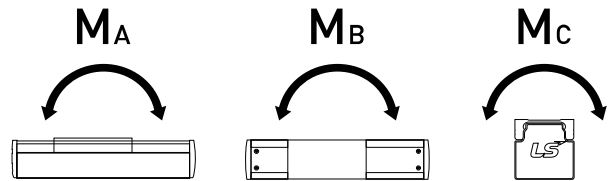
Body Size : 200mm / Stroke : ~1,700mm
 Servo Motor : 750W



○ Specification

Motor Output [W]		750		
LM Guide		NO. 25 (2Rail - 4Block)		
Ball Screw Size/Grade		Ø20 / C7		
Ball Screw Lead [mm]		05	10	20
Rated Speed [mm/sec]		250	500	1000
Maximum Load Capacity [kgf]	Horizontal	120	120	100
	Vertical	52	52	30
Stroke [mm]		~1,700		
Repeatability [mm]		± 0,01		
Color		White / Black		

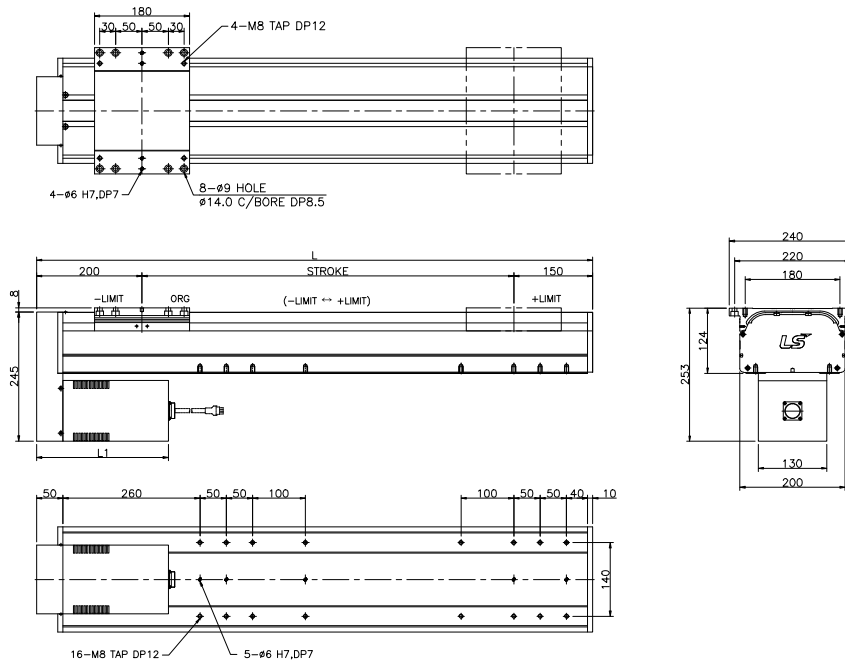
○ Statically Admissible State



Statically Admissible State [N-m]	MA	MB	MC
	2432	1507	710

○ Dimensions

[unit : mm]



Stroke [mm]		200	300	400	500	600	700	800	900	1000	1100	1200	1300	1400	1500	1600	1700
Weight [kg]		25.2	27.6	30	32.4	34.8	37.2	39.6	42	44.4	46.8	49.2	51.6	54	56.4	58.8	61.2
Max Speed [mm/s]	2005	250					195	155	130	110	90	80	70	60	50	48	43
	2010	500					390	310	260	220	180	160	140	120	110	100	90
	2020	1000					780	620	520	440	370	320	280	240	220	200	180
Body Length [mm]	L	550	650	750	850	950	1050	1150	1250	1350	1450	1550	1650	1750	1850	1950	2050
	Normal	L1	250														
			280														

MS Series

LU Series

MB Series

LB Series

LC Series

LL Series

LA Series

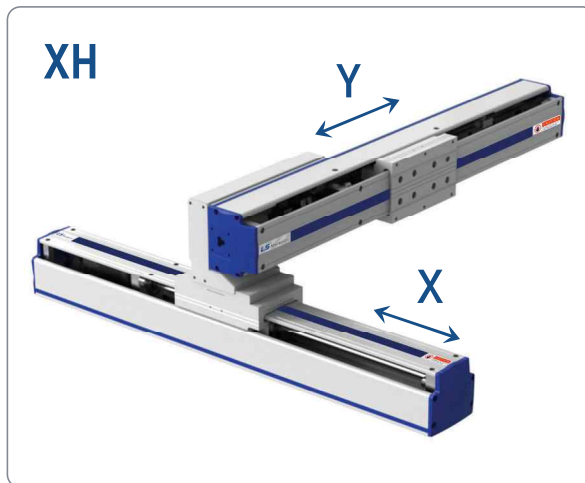
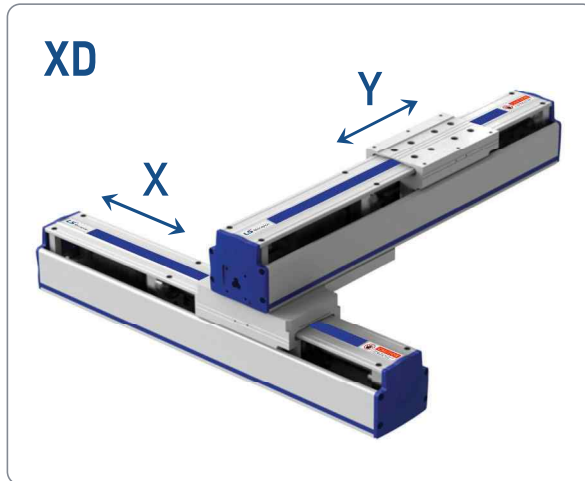
LX Series

LT Series

Ball Screw Type 조합 INDEX

로봇의 조합형태

- Bracket을 이용한 조합 형태는 크게 XD, XH, XV 3가지로 구분됩니다.



MS Series

LU Series

MB Series

LB Series

LC Series

LL Series

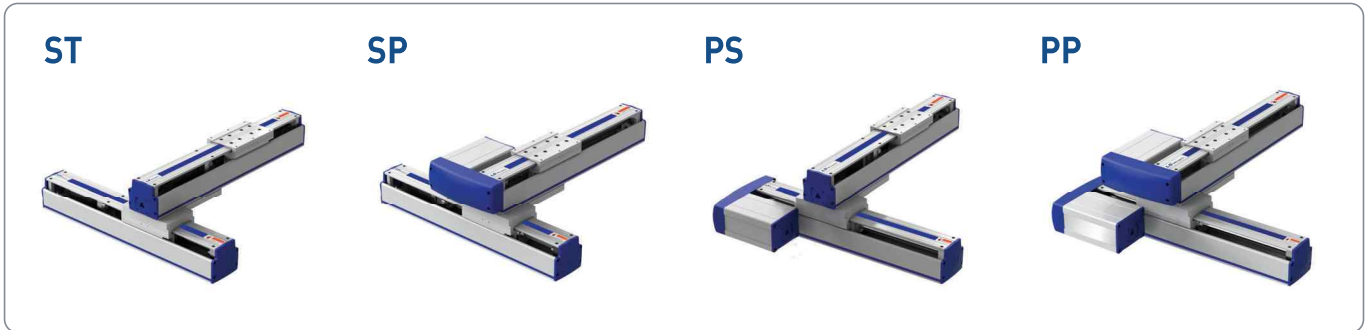
LA Series

LX Series

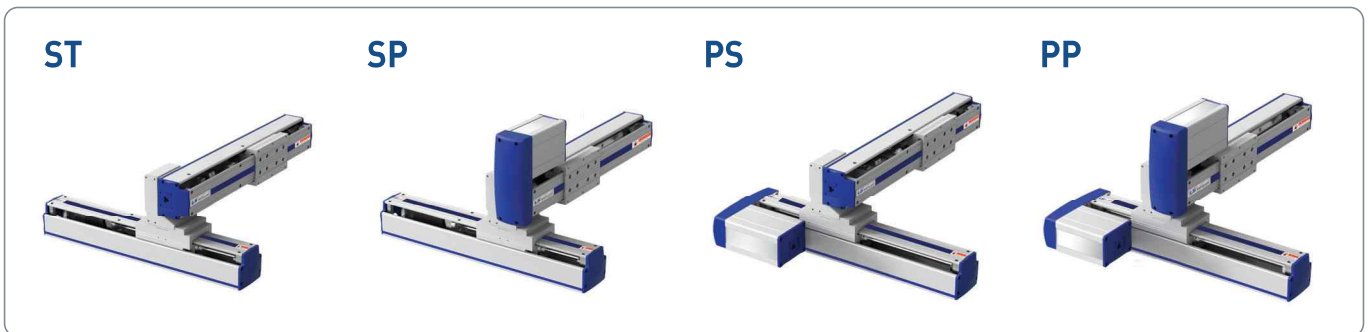
LT Series

조합형태에 따른 응용 모델

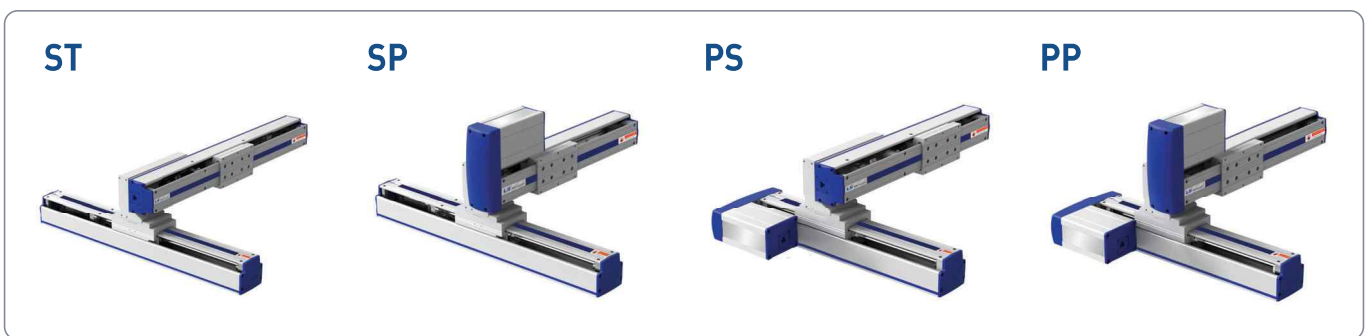
○ XD-AL-□□



○ XH-BS-□□



○ XH-BL-□□



○ XV-AV-□□



- MS Series
- LU Series
- MB Series
- LB Series
- LC Series
- LL Series
- LA Series
- LX Series
- LT Series